



MISSISSIPPI
CHILDREN'S
MUSEUM

THE MCM PLAYBOOK

FALL 2024 • VOLUME 9 • ISSUE 2

GET
INVOLVED
.....
MCM FACES
.....
HOLIDAY
HAPPENINGS

WITH EVERY
DEED YOU ARE
SOWING A SEED,

THOUGH A HARVEST
YOU MAY NOT SEE.



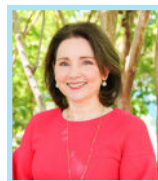
As the leaves begin to change and we welcome the crisp air of fall, we are reminded of the beauty and significance of growth and transformation. This season, our theme is "With every deed you are sowing a seed, though a harvest you may not see," inspired by Ella Wheeler Wilcox's poem "You Never Can Tell." At the Mississippi Children's Museum, we believe that every moment of exploration, discovery, and learning is a seed planted in the minds and hearts of our young visitors.

Our mission is to ignite a passion for learning and to nurture the potential in every child who visits our museums in Jackson and Meridian, as well as those who engage with traveling exhibits and programs through our statewide outreach. In addition to MCM's two award-winning museums with a collective 100,000 square feet of exhibits focusing on STEAM, Literacy, Health, Cultural Arts, and Mississippi Heritage, we also fulfill this mission-based work through programs like The LIFT, Talk from the Start, Reach Out and Read, Launch into Learning, and Computer Science Wonder. We provide innovative and interactive experiences that inspire children, families, and educators, alike!

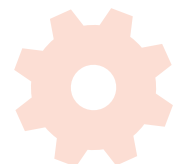
Every program and initiative at the Mississippi Children's Museum is rooted in our mission to grow Mississippi's children into successful, confident adults. By fostering a love for learning and equipping our young visitors with the skills they need to thrive, we are investing in the future workforce of our state.

As we look ahead to a season of growth and possibility, we are grateful for your continued support. Together, we are planting the seeds of knowledge, creativity, and inspiration. Though we may not always see the immediate harvest, we know that our collective efforts will yield a brighter, more prosperous future for all of Mississippi's children.

Gratefully,



Susan Garrard,
Mississippi Children's Museum President/CEO



Nonprofit Organization
U.S. Postage
PAID
Jackson, MS 39201
Permit No. 219



MISSISSIPPI CHILDREN'S MUSEUM
P.O. BOX 12870
JACKSON 39236



TABLE OF CONTENTS

- 3 Get Involved
- 4 Sowing Seeds - MCM Faces
- 5 From Seeds to Harvest - Recent Accomplishments
- 6 The Lift
- 7 Traveling Exhibits
- 8-9 MCM at Home
- 10 MS Science Fest
- 11-12 Holiday Happenings
- 13 MCM Partners
- 14-15 MCM Donors
- 16 Calendar

The MCM Playbook
Fall 2024 Volume 9 Issue 2

Published By: Mississippi Children's Museum

Editors: Angela Mitchell & Clara Draughn
Contributors: Tracy Pitts, Rebecca Parker, MCM & MCM-Meridian Staff
Graphic Designer/Photographer: Haleigh Collins

2024-2025 Board of Directors
Alicen Blanchard, Chair, Michael Cormack, Terry Dale Cruse, Margaret Cupples, Lisa Didion, John Fletcher, Otis Gowdy, Jr., Jeffrey Graves, Molly Griffin, Beth Hansen, Jetson Hollingsworth, Wilson Hood, Olivia Host, Maggi Lampton, Carla Lewis, Rachel Lott, Ashley Meena, Melanie Morgan, Chip Pickering, Adams Yerger, IV, Camille Young

Board Emeritus
Donna Bruce, James E. Graves, Jr., Martin F. Jue

Ex-Officio Member
Susan Garrard, President/CEO

MCM-Meridian Advisory Committee
Otis Gowdy, Jr., Chair, John Anderson, Patty Ann Bogue, Amy Carter, Beth Clay, Terry Dale Cruse, Ginger Delaney, Veldore Young Graham, David Hall, Kelvin Jackson, Asif Lala, Dustin Markham, Jim McGinnis, III, Melanie Mitchell, Chris Phillips, Don Rogers, Wade Sims

Ex-Officio Members
Laura Carmichael, Luke Davis, Cindy Smith
Barbara Zeller, MCM-Meridian Executive Director

WELCOME NEW BOARD MEMBERS!

JACKSON
Molly Griffin, President Elect, Junior League of Jackson
Rachel Lott, MCM-Jackson Partners President

MERIDIAN
Ginger Delaney, MCM-Meridian Partners President



MEMBERSHIPS
MCM-Jackson & MCM-Meridian offer memberships for families big and small, as well as a dual membership for both museums. Join today and receive member benefits and unlimited visits all year long!

NEW PRICES
\$125.00 = Maker (3 named individuals)
\$155.00 = Thinker (4 named individuals)
\$185.00 = Builder (6 named individuals)
\$250.00 = Achiever (9 named individuals)

NEW PERKS

All membership levels will now receive Association of Children's Museums reciprocal network benefits. The Achiever level will now automatically receive a Dual Membership for the Jackson and Meridian locations.

BIRTHDAY PARTIES

The Mississippi Children's Museum is the ultimate imagination destination to celebrate your birthday! Give your little one the gift of a memorable, fun-filled birthday at the museum. With a variety of party add-ons, complimentary invitations and more, our museums offer the perfect space to celebrate any child's big day!

BOOK YOUR PARTY:



JACKSON



MERIDIAN



VIEW OUR SPACES:



JACKSON



MERIDIAN

FACILITY RENTALS

The Mississippi Children's Museum in Jackson and Meridian offer an engaging and playful atmosphere to make your event unforgettable. Each unique space has a colorful ambiance that is multifunctional to suit your event. From partial to full museum rentals, we offer a variety of price points with amenities featuring on-site parking, handicap accessibility, wireless internet access, and more.

VOLUNTEERS

Sign up to volunteer at the Mississippi Children's Museum in Jackson and Meridian! Our volunteer programs for ages 16+ are the perfect way to earn community service hours, gain real-world experience, and make a positive impact in the lives of children. Explore our volunteer opportunities for all ages and skillsets today!

BECOME A VOLUNTEER:



JACKSON



MERIDIAN



BOOK YOUR FIELD TRIP:



JACKSON



MERIDIAN

FIELD TRIPS

Field trips to MCM promote hands-on, inquiry-based learning that fosters valuable critical thinking skills.

Group visits are available for groups of 15 or more children and available only on weekdays. Standard group visits are two hours. Tickets are \$5/student.



The Mississippi Children's Museum was named the #3 BEST CHILDREN'S MUSEUM in the country by USA TODAY for the 2024 READER'S CHOICE TRAVEL AWARDS!

Twenty museums were nominated by an expert panel and voted on by museum supporters and USA Today readers. We are so honored to be named one of the best in the nation!

FROM MCM YOUTH AMBASSADORS TO MCM STAFF MEMBERS



SE'LAH NORWOOD

From volunteering as a MCM Youth Ambassador to joining MCM's team as Programs Assistant, Se'lah Norwood has discovered a love for education and teaching.

"I love working with children, and I discovered my love for teaching while leading some of our educational programs," said Se'lah. "My experience working at the museum has also benefited me in my school courses, which has made it easier to understand certain concepts."

She shares that one of her most memorable experiences at MCM is being involved in the exhibit renovation and grand opening of *The Enchanted Land of Story*. Se'lah is a featured artist in the exhibit and shares her talent of composing beautiful melodies that children learn to play, as well.

A skill set that she has learned while volunteering and working at MCM is adaptability. "MCM has taught me when things don't go as planned, to not be afraid or frustrated, but to assess the situation and quickly formulate the best solution," said Se'lah.

ALLIE KATE WILLIAMS

From visiting the museum with her family when it first opened, to volunteering in high school as a member of the Youth Ambassador Council, to now working at the museum as MCM's Grant Writer, Allie Kate Williams has a unique perspective of the role MCM offers to its community.

"I came to appreciate MCM in a new way when I began volunteering and saw firsthand the impact it has on children. As an avid reader, I particularly enjoyed volunteering in the Wild About Reading gallery and helping children engage with reading," said Allie Kate. "MCM really makes reading fun and gives children an opportunity to dive into the world of their imagination."

While reading is a hobby of Allie Kate's, she says she found it more challenging to connect with science-related experiences. "Learning more about MCM's WonderBox exhibit and seeing firsthand how children can interact with the exhibits—from crafting to learning robotics—has shown me that everyone can benefit from engaging with STEAM concepts and learning to be a fixer."

"Volunteering in the museum, I learned important communication and teamwork skills. These skills have stayed with me and now help me every day in my new role at the museum."



MALIK SHAVERS - FROM MCM VOLUNTEER TO NEW YORK ENGINEER

Malik began visiting the Mississippi Children's Museum as a child, and his love for the museum and its mission for creating a love of learning has influenced him throughout his academic and professional career. Malik served as a MCM volunteer for many years, then joined MCM's staff as a lead Visitor Assistant, where he ensured guests had a memorable experience. He also enjoyed acting as Rocky the Reader (MCM's mascot) and a mentor to MCM's afterschool students.

"Being a Lead Visitor Assistant at the Mississippi Children's Museum profoundly impacted my life and continues to influence me today," said Malik. "Visitor Assistants are the heart and soul of the museum, responsible for shaping each guest's experience. This role taught me invaluable traits that have contributed to my success in the workforce, including punctuality, work ethic, hospitality, service, leadership, accountability, charisma, and decision-making. This wonderful role provided me with the foundation to excel both professionally and personally."

MCM's mission is to inspire excellence and a lifelong joy of learning. This may start during a child's first visit to the museum, but the goal is that it carries well into their adult lives as they continue to learn and grow, and therefore influence the next generation.

"As a Systems Engineer for a global technology company, the one exhibit space that continually captures my attention is WonderBox. I love how this space simplifies engineering concepts, allowing guests to explore and create. Engineering, at its core, is about creativity and technology, and the CRAFT, light bright, and facilitated space within the exhibit serve as excellent foundational tools for young, aspiring engineers."



THE CANTERS - LAUNCH INTO LEARNING FAMILY

Elizabeth and Katherine Canter have been members of MCM's Launch into Learning since the program started in 2020. The sisters share that they love MCM's afterschool program because of the different things they learn about such as chess, cooking, health, and reading.

"Learning chess at MCM helps me become better in school. It teaches life skills and communication that I'm able to use at school to help me follow rules and not get in trouble," said Elizabeth.

They also enjoy being the first guests to try out new exhibits and programs. "I love the exhibits such as PAW Patrol, Dino Train, Splash and Bubbles, and the slide at Christmas," said Katherine.

In addition to learning and playing, they also cherish the new friendships they've made at MCM. "I'm happy MCM is here, because I get to make new friends," said Katherine.

"I've made many friends at afterschool. Most of them have taught me many new things and I'm happy to have met them. They are truly amazing people," added Elizabeth.

Andrew and Rachel Canter, share that MCM has been a special part of their family's life, especially over the last four years. "We are very happy to have such a great educational afterschool option for our family that fits within our schedule and needs. During the pandemic we could count on the museum to provide a safe space while we dealt with challenges of balancing school and work. We've been members of the museum for a while and are so grateful for the resources it provides for our family," said Rachel Canter.



Pictured: Elizabeth (10), Rachel, Andrew, Katherine (8) Canter



Pictured: Elise, Simon (5), Paul (2) Coissals

THE COISSALS - MCM-MERIDIAN MEMBERS

Elise, her husband, and their son, Simon, moved from France to Meridian, MS in October 2022 due to military orders. Shortly after settling in, they discovered MCM-Meridian, where they developed a cherished routine, especially enjoying the *ABC Come Play with Me* program every Tuesday morning.

Over the past two years, Elise has seen MCM-Meridian positively impact Simon's development through its educational exhibits and programs. It has helped refine his fine motor skills, taught him English and math, and facilitated new friendships. The museum has also laid a strong foundation for Paul, mirroring Simon's path of exploration and growth.

As their time in Meridian nears its end and they prepare to return to France, Elise reflects on the invaluable experiences they've had at MCM-Meridian. "It has been more than a place of growth and learning; it's been a sanctuary, a social hub, and a window into Meridian life," said Elise.

ABC Come Play with Me is presented by the Phil Hardin Foundation

R.V. POWERS AND ROBERT E. LAKE FOUNDATIONS

MCM is so grateful for the support of R.V. Powers and Robert E. Lake Foundations, who have generously donated essential funds for our *Launch into Learning* program! Their contributions are instrumental in ensuring the success and sustainability of this program. Through this partnership, MCM's afterschool program will be able to continue the important work in afterschool care and provide an enriching experience through diverse programming and mentorship for the 2024-2025 school year.



Pictured L to R: Myer Mack, Bethany Culley, Lori Quarles, Susan Garrard, Emily Hoff, and Doug Hederman.

FROM SEED TO HARVEST

RECENT ACCOMPLISHMENTS

REACH OUT AND READ

Thanks to support from Mississippi's Early Childhood Investment Council, MCM recently purchased 18,000 books and shipped them to several of our Reach Out and Read clinics. The MCM team sorted, stickered, and boxed the 18,000 books in just 4 days! The books were delivered to 11 clinics to stock their shelves and then shared with our state's youngest citizens to aid in their language and literacy development. We are so grateful to supporters such as the Community Foundation for MS, W.K. Kellogg Foundation and Mississippi business leaders for the continued support of our programs and initiatives that promote literacy amongst Mississippi's children!



Community Foundation
FOR MISSISSIPPI
WITH FUNDING FROM THE W.K. KELLOGG FOUNDATION

THE ENCHANTED LAND OF STORY IS NOW OPEN!

MCM celebrated the opening of *The Enchanted Land of Story* on April 18, 2024, with dozens of partners who played a key role in the renovation. We are grateful to the Mississippi Arts Commission for the initial support that gave us the confidence to move forward, the Hearst Foundations, and our local team at WAPT for a gift that allowed us to expand the project and add new elements. We are especially thankful for the Gertrude C. Ford Foundation for believing in this project in 2016 and making a gift that has allowed us to sustain this beautiful space.

Among the 10 new experiences included in the garden, three were led by our talented featured artists:

Se'lah Norwood, MCM's Programs Assistant, is the composer of the original songs featured in the *Hear the Forest Sing* instrument knoll. She composed two new songs, "Enchanted Land of Story" and "Topsy Turvy World," for the garden, which are her first published pieces. Guests can create melodies of their own by replicating the music notes found on the song sheets mounted by the new instruments: xylophone, daisy drum, and hand pipes.

Lee Harper, a talented Mississippi artist known for her work in miniature recreations of iconic structures, created a custom installation for the garden, named "Little Bit of Mississippi." As a Mississippi native, originally from Meridian and currently residing in Oxford, Lee found inspiration in MCM's statewide influence and educational initiatives around Mississippi heritage. When you visit, use the 'Seek and Find' handout to help you find a few of the 43 hidden Mississippi objects in her piece.

Lori Nesbitt, former MCM Senior Graphic Designer, created unique and beautiful works of art that fill the entire garden with color and create a visual story. She designed and painted two new murals, along with 42 exhibit signs that bring to life each line of the poem. She also illustrated five playful dragons to prompt children to follow the numbers to see all the places for play.

Since opening, the garden has been full of happy children and families spinning, balancing, playing music, building sandcastles, and splashing in puddles. During your next visit we hope you'll create your own *Enchanted Land of Story* and share your experience with us! Tag us in your pictures at @mschildsmuseum.



SUMMER SUCCESS

This summer at the Mississippi Children's Museum in Jackson has been a resounding success, marking the busiest season since the museum's opening in 2010. Guests enjoyed the *PAW Patrol: Adventure Play* exhibit, the C Spire Plaza Splash Pad, and the reimagined *Enchanted Land of Story*, which features a thrilling water experience to keep cool on hot summer days.

The museum welcomed numerous field trips, birthday parties, and facility rentals, further contributing to its vibrant atmosphere. Summer campers learned about space, chess, theatre, and art. And as students embarked on their journey 'back to school' we celebrated Harry Potter's Birthday in the most magical way with a ride on the Wizard Express!

MCM-Meridian had an equally amazing summer! An increase in visitation for Magic Mondays, Patriotic Day, and Harry Potter's Birthday are a few of the successes they celebrated. Special guests from the Mississippi Aquarium and the Mississippi Museum of Natural Science provided an exciting and fun summer of diverse programming. Young writers were able to meet Visiting Authors, Krissi Long and Dekota Cheatham, to hear them read and sign copies of their books.

VISITORS:
61,880

FIELD TRIP PARTICIPANTS:
4,894

BIRTHDAY PARTY PARTICIPANTS:
1,883

NUMBER OF STATES:
31

PAW PATROL GIFT SHOP ITEMS SOLD:
1,220

SUMMER CAMP PARTICIPANTS:
822

PAW PATROL EVENTS:
2,358

PATRIOTIC DAY:
1,565

HARRY POTTER'S BIRTHDAY:
1,993

LAUNCH INTO LEARNING

MCM provides a robust, daily afterschool program serving over 100 students from Jackson Public Schools and 30 students at MCM-Meridian from Meridian Public Schools. Launch into Learning students receive 180 days of engaging instruction in art, literacy, coding, and robotics - a diverse curriculum designed to enhance their in-school learning. This program was born out of a dire community need and, within four short years of operation, has received statewide recognition and praise from the Mississippi Afterschool Network.

Research consistently demonstrates that high-quality afterschool programs positively impact students' educational outcomes, school attendance, and social and emotional learning. Investing in enriching afterschool programs like MCM's Launch into Learning is a critical component in students' future success.



RESULT SUMMARY

LAUNCH INTO LEARNING

I-READY ASSESSMENT RESULTS

2023-2024 SCHOOL YEAR

Of the 132 Launch into Learning Students in Jackson and Meridian, 42 students were evaluated based on I-Ready assessment scores.

The following data shows impressive improvements from beginning of the year to end of year assessments for students in grades Kindergarten to 5th Grade.

MERIDIAN

READING ASSESSMENT

At or Above Grade Level

37% INCREASE

AVERAGE FOR ALL GRADES - 11.5 POINTS INCREASE



KINDERGARTEN - 218 POINTS INCREASE

MATH ASSESSMENT

At or Above Grade Level

34.6% INCREASE

AVERAGE FOR ALL GRADES - 16.4 POINTS INCREASE



KINDERGARTEN - 40.8 POINTS INCREASE!

JACKSON

At or Above Grade Level

30% INCREASE



AVERAGE FOR ALL GRADES - 29.6 POINTS INCREASE

Data shown is a summary from an I-Ready Assessment conducted by Mississippi State University's National Strategic Planning & Analysis Research Center based on scores from MCM-Meridian's Launch into Learning Afterschool participants. MCM-Jackson's Launch into Learning evaluation was conducted by Jackson Public Schools.



CS WONDER

MCM has partnered with Mississippi State University's Department of Cyber Education to offer training in coding, robotics, and digital literacy through a program called Computer Science Wonder (CS Wonder). CS Wonder not only encourages connection between educators and tech industry professionals, but it also provides intensive STEAM training for teachers. Educators attended three training sessions, completed online curriculum, and were given a comprehensive kit of materials to implement their newly acquired skills in the classroom.

Teachers and students put these skills to the test during a CS Wonder Coding Competition held at MCM in Jackson and Meridian this spring. Sixteen fourth grade teams from across the state competed to prove they had the best coding skills. Students were assigned roles such as designer, project coordinator, coder, and builder. Staff from Mississippi State University's Department of Cyber Education and Central Creativity observed and supported the teams as they navigated through the challenges they were given. Teams were judged on their creativity, level of teamwork, each team member's participation, and their ability to plan, organize, and execute their ideas.

Computer Science (CS) Wonder is funded by the Institute of Museum and Library Services.

THE THREE SISTERS RECIPE

In Indigenous American agriculture, corn, beans, and squash were planted together to help the crops thrive. These important food sources were paramount to Indigenous diets and became known as "The Three Sisters." Corn was planted first to provide a stalk for the beans to grow on. As the beans grow, they climb the corn stalk reaching towards the sun and provide nitrogen from the air to benefit all three crops. The squash, planted last, grows close to the ground with large, prickly leaves that protect all three crops from pests and shade the soil to keep it moist. The Three Sisters work in tandem to create a perfect blend of harmony and deliciousness.

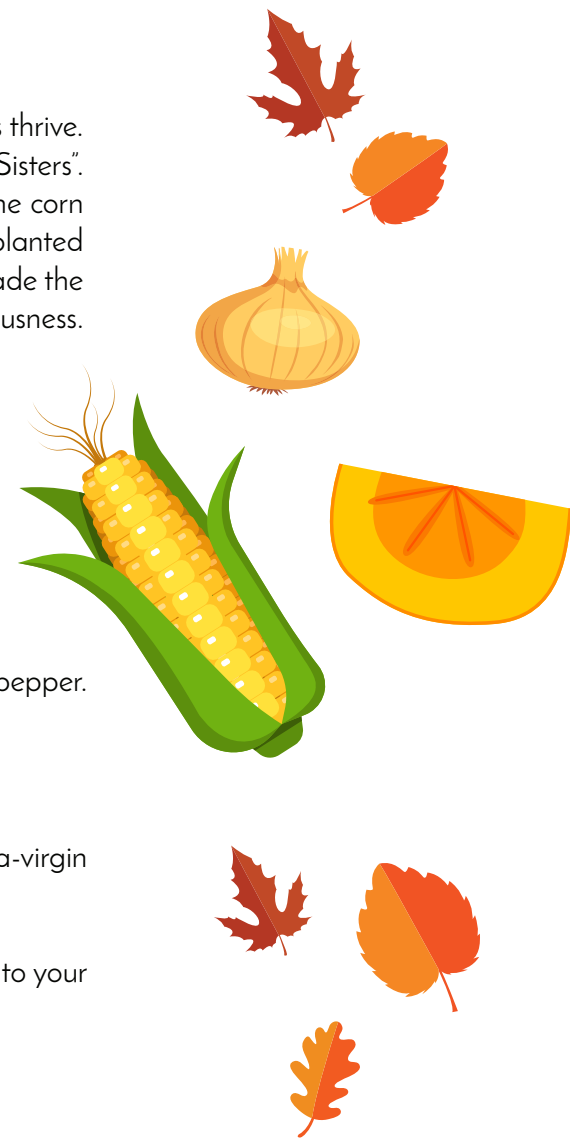
THREE SISTERS SUCCOTASH

INGREDIENTS

- 1 can of creamed corn
- 1 can of black-eyed peas
- 2 small zucchinis; cut into chunks
- 1 tablespoon butter
- 2 tablespoons extra-virgin olive oil
- Seasonings to taste: We used garlic powder, minced onions, creole seasoning, pepper, and cayenne pepper.

DIRECTIONS

1. Wash and cut zucchinis into chunks.
2. In a deep pan on the stove top, add zucchinis with 1 tablespoon of butter and 2 tablespoons of extra-virgin olive oil on medium heat. Sauté zucchinis for a few minutes to add color. Do not fully cook here.
3. Add 1 can of creamed corn and 1 can of drained black-eyed peas to the pan with zucchinis. Season to your liking and mix. Cook on medium for 3 minutes.
4. Let veggies cook on low until the zucchinis are tender.



DANCING APPLE SEEDS EXPERIMENT

VOCABULARY:

Hypothesis: A proposed explanation for some event or problem. An educated guess.

MATERIALS

- Apple seeds
- Clear jar or vase
- Water
- Baking soda
- Vinegar
- Spoon

DIRECTIONS

1. Fill your jar about halfway with warm water. Don't fill it all the way to the top!
2. Stir in 1-2 tablespoons of baking soda. Warm water helps the baking soda dissolve.
3. What do you think will happen when you put your apple seeds into the warm water with baking soda? Will they sink? Will they float? Make a hypothesis.
4. Slowly add in the vinegar a tablespoon or two at a time. What is happening to your apple seeds? Why do you think this is happening? Has your hypothesis changed?

WHY DOES IT WORK?

When baking soda and vinegar mix, carbon dioxide forms. Because the gas is forming in a liquid, it creates bubbles. The bubbles carry your apple seeds to the top of the water, making them rise and fall over and over again in the jar!



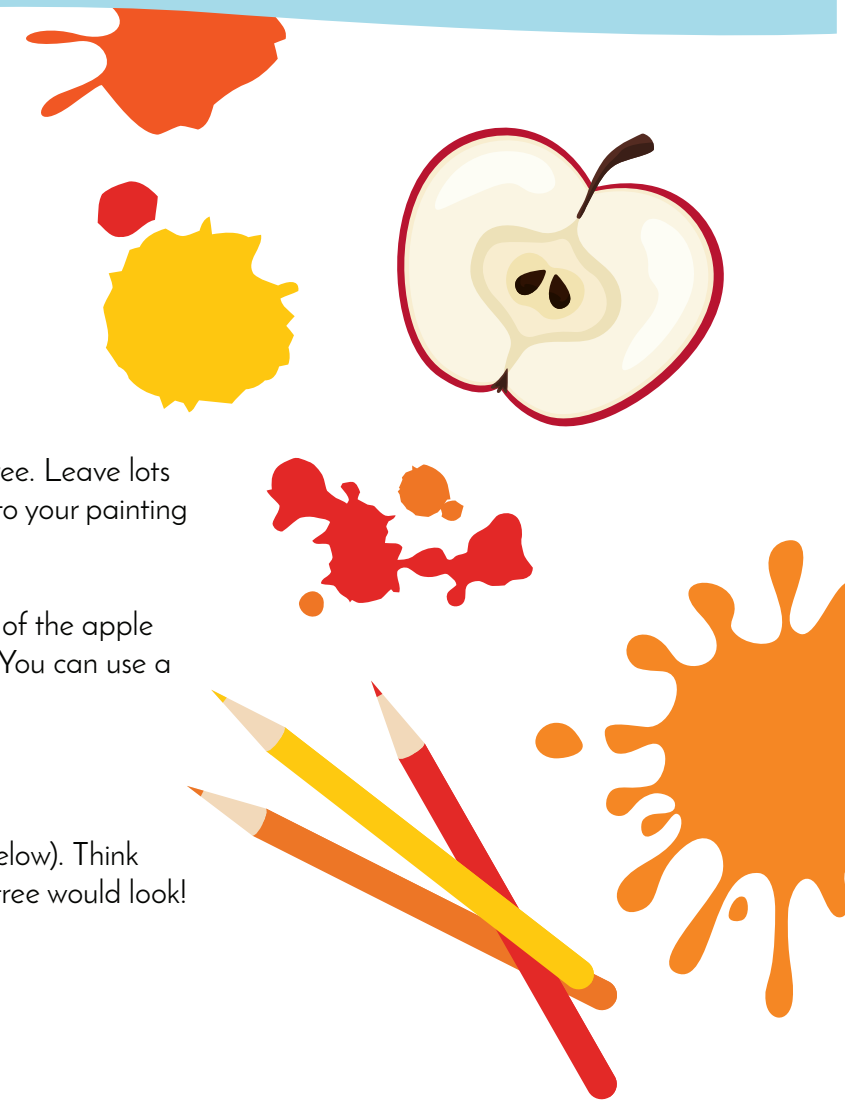
APPLE TREE PAINTING

MATERIALS

- Halves of apples (leftover from Dancing Apple Seeds experiment)
- Paint - red, yellow, orange, and green
- Plate for the paint
- Paper towels
- Paper
- Crayons or markers

DIRECTIONS

1. On a piece of paper, draw a tree trunk with no leaves. This will be the base of your apple tree. Leave lots of space at the top for your apple leaves! You can color the tree trunk or add other elements to your painting like grass, flowers, or animals.
2. Pick your paint colors and pour some of each color on to a paper plate. Using the flat side of the apple half, dip it in one color of paint and stamp the apple print on to the top of your tree trunk. You can use a paper towel to wipe off the paint to change colors.
3. Fill your apple tree with a variety of apple colors.
4. Listen to the read-aloud story "If You Plant a Seed" by Kadir Nelson (scan the QR code below). Think about the seeds of kindness that were sown in the story and imagine how a kindness apple tree would look!



GERMINATING APPLE SEEDS

VOCABULARY:

Germination: The process by which a seed begins to grow and develop into a new plant.

Dormancy: A period in an organism's life when growth, development, and physical activity are temporarily stopped.

DID YOU KNOW...?

Apple seeds need something called cold stratification to break dormancy. This means that the seeds won't sprout until they have reached a certain temperature for at least 6 weeks. This is a defense mechanism that ensures the seed won't sprout until winter is over.

Here in Mississippi, the winter often doesn't stay cold long enough for these seeds to reach the temperature required, but you can "trick" the seeds into thinking that it's winter by putting them in your refrigerator!

DIRECTIONS

1. Use the apple seeds from one of the other activities or eat a new apple and take the seeds from the core when you are finished.
2. Place the seeds in a moist paper towel, and then put the paper towel into a plastic bag. Make sure that you leave it open just a little so the seeds can get some air.
3. Store your bag in the back of the refrigerator and check on the paper towel once a week to make sure it stays moist.
4. Practice patience—it's going to take 6 weeks for your seeds to be ready to plant! Pay attention when you check on them—as you get closer to the end of the 6 weeks, some of the seeds may have started to sprout!
5. After you have left the seeds in your refrigerator for 6 weeks, you are ready to plant them! Sprout them in pots first so squirrels and other critters don't turn them into a snack! If you plant the seeds outdoors, make sure you wait until the last winter frost has passed.
6. Grow your apple tree sprouts in the pots until they are about 4-6 inches tall, then transplant them into the ground. Be mindful of where you plant them—these tiny sprouts will grow into trees!

STORY READ-ALoud



Scan the QR code to listen to "If You Plant a Seed"

NOTE: These trees won't bear fruit right away. It can take as many as 8 years for an apple tree to get big enough to produce apples, so you may have to keep buying your apples from the store or farmer's market for a while longer!



MISSISSIPPI SCIENCE FEST



9.21.24
LONG LIVE WONDER

Explore all four museums in the LeFleur Museum District for one low ticket price of \$10!
Purchase tickets at

MSSCIENCEFEST.ORG

The Mississippi Science Festival (MSF) is the LeFleur Museum District's (LMD) signature event presented by C Spire, which will take place on **September 18-21, 2024**.

MSF brings the community together to celebrate careers in STEAM (science, technology, engineering, art, and math), and has introduced children of all ages to the wide variety of STEAM concepts and industries that are available in Mississippi. Events will take place over four days in various locations across the state: the LeFleur Museum District in Jackson, the Mississippi Children's Museum - Meridian, and the B.B. King Museum in Indianola. Saturday's festival is open to the public and participation is encouraged statewide.

SCRATCH DAY

Mississippi State University's Center for Cyber Education will host a Scratch Day at MCM on Saturday September 14th. Scratch Day is a global network of events where people gather to celebrate Scratch's free creative coding platform and online community for children. Scratch Day is a family event that will engage parents, caregivers and children in a day of coding! Thanks to the C Spire Foundation, the first 300 participants to register will receive free admission to MCM.

WEDNESDAY, SEPT. 18

TECH SUMMIT | JACKSON STATE UNIVERSITY

WEDNESDAY, SEPTEMBER 18, 2024 | 8:00AM - 2:00PM

SPONSORED BY THE GREAT CITY MS FOUNDATION, C SPIRE, AWS

Please join us to explore topics surrounding AI and the future of education and workforce. For a detailed schedule and more information visit mssciencefest.org.

THURSDAY, SEPT. 19

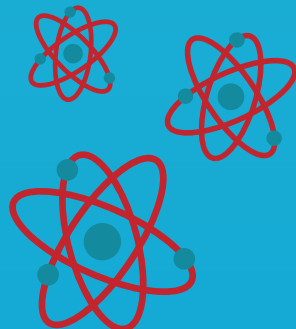
C3 JR. CODING CHALLENGE (MCM-JACKSON & MCM-MERIDIAN)

FRIDAY, SEPT. 20

FIELD TRIP FRIDAY (MCM-JACKSON & MCM-MERIDIAN)

PAWNS N' PAJAMAS (MCM-JACKSON)

REGISTER HERE:



SATURDAY, SEPT. 21

MISSISSIPPI SCIENCE FESTIVAL

For this special event, the LeFleur Museum District in Jackson offers admission to four museums for one ticket price of \$10. This year's event will feature a special guest, Melissa Alderete, known as Science Girl. Visiting us from New Mexico, Science Girl plans to wow visitors with interactive science demonstrations and fun, hands-on STEAM activities. Visitors will also get the chance to meet and engage with over 50 exhibitors stationed throughout the LeFleur Museum District.

LMD Museums include the Mississippi Children's Museum, Mississippi Agriculture & Forestry Museum, Mississippi Sports Hall of Fame & Museum, & the Mississippi Museum of Natural Science.

SCIENCE SATURDAY IN MERIDIAN

The Mississippi Children's Museum - Meridian is celebrating STEAM (science, technology, engineering, art, and mathematics) in conjunction with the Mississippi Science Festival on September 21st from 10am - 3pm.

Science Saturday offers a nurturing environment that inspires children and families to explore STEAM concepts and uncover possible careers in Mississippi. Families are invited to engage with Mississippi's leaders in STEAM and participate in educational, hands-on activities and interactive exhibits.



MISSISSIPPI SCIENCE FEST AT THE B.B. KING MUSEUM AND DELTA INTERPRETIVE CENTER

Join us for Mississippi Science Fest at the B.B. King Museum in Indianola, MS on Saturday September 21st. Explore the world of honeybees, learn about the movement of water, engage in the science of health and nutrition, and more! The museum will be open from 10 a.m. - 5 p.m. with MSF activities happening from 10 a.m. - 2 p.m. Admission is free for Sunflower County residents.

Join us for these **SPOOKTACULAR** events this fall!

MISSISSIPPI CHILDREN'S boo!seum

SATURDAY, OCTOBER 19
10AM - 3PM

Join us in costume at the Mississippi Children's Boo!seum in both Jackson and Meridian for a day full of spooktacular science, festival fall games, creepy-crawly crafts, and glowing dance parties!

JACKSON & MERIDIAN

FRIDAY, OCTOBER 25
5:30 PM - 8:30 PM

Dress up in your Halloween costume and head to the Mississippi Children's Museum - Jackson and MDWFP's Museum of Natural Science for the annual Park After Dark event! Explore fantastic family fun and spooky science at this special evening event. Easily travel between both museums and the LeFleur's Bluff Playground using Spotter's Adventure Trail and enjoy admission to both museums for one ticket price of \$12!

JACKSON



Holiday Happenings



JOURNEY TO THE NORTH POLE

NOVEMBER 24 - JANUARY 5

This one-of-a-kind holiday experience transforms MCM into a magical winter wonderland with twinkling lights, train cars, and a child-sized post office where you can write letters to Santa. Glide around the Reindeer Rink in your favorite pair of festive socks, ride our thrilling 45-foot Snowflake Slide, and cozy up by the fire inside Eudora Welty's living room!

JACKSON



NORTH POLE

JAMMIES AT JOURNEY DECEMBER 6 | 5:30 PM - 7:30 PM JACKSON

Guests are invited to wear their favorite pair of holiday jammies and coziest pair of socks to an after-hours Jammies at Journey event at MCM-Jackson. Enjoy festive educational programming and create magical memories at Jackson's ultimate holiday exhibit, Journey to the North Pole.



ROOKS & REINDEER CHESS TOURNAMENT DECEMBER 6 | 5:30 PM - 7:30 PM JACKSON

Join us for our Rooks N' Reindeer Chess Tournament. Wear your festive holiday pajamas and put your chess skills to the test!

REINDEER WORKSHOPS JACKSON REINDEER WORKSHOPS: DECEMBER 20, 21 & 23 MERIDIAN REINDEER WORKSHOPS: DECEMBER 7 & 21

Don't miss your chance to attend one of our popular Reindeer Workshops this holiday season! Participants can choose their own fabric and accessories, sew a stylish sweater, and enjoy cookies and hot cocoa. Each reindeer comes with a birth certificate and pet carrier!



WINTER WONDERLAND

NOVEMBER 23 - JANUARY 5

Step into Winter Wonderland at the Mississippi Children's Museum - Meridian to experience holiday magic! From November 23 - January 5, MCM-Meridian will offer a variety of holiday activities including story time with Santa, sock skating in the Snowflake Village exhibit, reindeer workshops, festive photo ops, and much more.

MERIDIAN



PEPPERMINT & PJS DECEMBER 6 | 6:00 PM - 8:00 PM MERIDIAN

Celebrate the holiday season during Peppermint & PJs, an exclusive after-hours event for museum members. In your most festive pair of pajamas, join us at the museum for holiday crafts and activities, milk and cookies, and the chance to share your holiday wishes with Santa Claus!



NOON YEAR'S EVE

DECEMBER 31 | 10:00 AM - 1:00 PM

Celebrate Noon Year's Eve in both Jackson and Meridian, while you ignite your creativity and invigorate your dreams for the new year surrounded by family and friends. Dance to catchy melodies, create festive party hats, and gather for a burst of confetti and balloon drop as the clock strikes noon!

JACKSON & MERIDIAN

*MCM-Meridian's Noon Year's Eve is sponsored by Community Bank.



Visit Santa at MCM in Jackson and Meridian this holiday season! Check our website and social media for dates and times.

GIVE THE GIFT OF IMAGINATION THIS HOLIDAY

Dreaming of a unique gift for your children this holiday?

Visit MCM's Trading Post in Jackson and Meridian!

- Shop our innovative and fun toy selection
- Complimentary gift wrapping and convenient curbside pickup upon request
- Gift certificates and memberships make the perfect holiday gift!



BLACK FRIDAY SALE!

Nov. 29
25% Off Select Items

MCM Partners

NEON NIGHT

JACKSON

Over 500 guests danced the night away under neon lights at MCM Partners signature summer event, Neon Night in Jackson! Thank you to our Neon Night Committee and our presenting sponsor, TrustCare, who helped make this event a grand success. In combined efforts from generous sponsors, event hosts, silent auction, and guests, this year's Neon Night fundraiser contributed over \$100,000!



MINGLE AT THE MUSEUM

MERIDIAN

Over 250 guests joined us for our signature summer fundraiser, Mingle at the Museum, featuring live music, tasty food truck bites, cold drinks, entertaining carnival games, and more. Through our amazing raffle packages, pay-to-play games, event tickets, and sponsorships, this event raised more than \$26,000. This incredible night would not have been possible without the support of our sponsors, guests, volunteers, and staff. Thank you to all who played a part in helping us reach our fundraising goals to support the mission and vision of MCM-Meridian!

A VERY MERRY NIGHT NOVEMBER 23 | 6 PM - 8 PM JACKSON

Join MCM Partners on Saturday, November 23 for A Very Merry Night! This family fundraiser serves as the premier holiday event of the year, taking place on the opening night of MCM's popular holiday exhibit, Journey to the North Pole in Jackson. The event includes a live DJ, photos with Santa, a dinner buffet, adult beverages, and holiday STEAM programs.



MERRY AT THE MUSEUM

SATURDAY, DECEMBER 14 | 7 PM - 11 PM

MERIDIAN

Bring on the holidays at the annual Merry at the Museum celebration presented by BankPlus! This December, join us for an evening of glimmer and glee as we spark the holiday spirit. From festive live music and enchanting performances to mouth-watering bites and elevated cocktails, you won't want to miss this opportunity to make merry and celebrate the season. Dress to impress and join us for an unforgettable night of festive fun!

Save the Dates



LOVE BUG BOOGIE - MCM-MERIDIAN
Friday, February 7



IGNITE THE NIGHT - MCM-JACKSON
Saturday, February 8



WELCOME, LORI QUARLES, DIRECTOR OF DEVELOPMENT

The Mississippi Children's Museum is excited to welcome Lori Quarles as the new Director of Development at MCM in Jackson. Lori is no stranger to MCM as she has been on the team as a volunteer with Partners for several years serving in various roles from Rocket Club Afterschool Committee, Ignite the Night Chair, and most recently as President of Partners. Her experience with MCM in these roles serves as a great foundation in continuing a great working relationship with our current donors while fostering and forming new relationships both locally and throughout the state. Lori's enthusiasm and commitment to our mission will have a lasting impact on the children of our state.

PRESTON HAYS AWARD OF LIGHT

The recipient of the PRESTON HAYS AWARD OF LIGHT is a passionate advocate for community engagement and volunteerism, whose dedication to making a positive impact for the Mississippi Children's Museum has been unwavering. Anne Dulske embodies that spirit, and her love for all things MCM developed during her time as Mission Control Co-Chair. Since then, she has been a committed volunteer and Partner serving on many event committees and ensuring that the museum staff is appreciated. Anne's main passion has consistently been working with hands-on, community-related projects that directly impact children and their families who are a part of the museum.



MCM-MERIDIAN PARTNER OF THE YEAR

MCM-Meridian is pleased to recognize Keemonica Johnson as our Partner of the Year for the 2023-2024 membership year. Her exceptional commitment to our mission, from her invaluable contributions to fundraising events to her dedicated support of our Happy Healthy Families program, has truly set her apart as an exemplary Partner.

MCM STATEWIDE DONORS

THANK YOU DONORS!

Contributors to the Mississippi Children's Museum from

JUNE 1, 2023 - MAY 31, 2024

* denotes an in-kind donation

If you wish to change your recognition, please contact us at donate@mcm.ms.

\$25,000+

Anonymous
Maggi and Lee Lampton
Atmos Energy Corporation
Barksdale Reading Institute
Community Foundation for Mississippi via the W.K. Kellogg Foundation
C Spire Foundation
Ergon Foundation, Inc.
Institute of Museum and Library Services
Jackson Heart Foundation
Mississippi Farm Bureau Federation
Nissan North America, Inc.
Regions Foundation
The Luckyday Foundation
Trustmark

\$10,000 - \$24,999

Allison and Austin Barrett
Frieda and Joe Lauderdale
Ashley and Hu Meena
Aplos Restaurants
BankPlus
CenterPoint Energy
Eaton Corporation
Feild Co-Operative Association, Inc.
Henry and Martha Hederman Charitable Foundation
Hinds Behavioral Health Services
Horne LLP
Junior League of Jackson*
Regions Bank
Telos Foundation
The Fountain Family Foundation
The Mapp Family Foundation
Toyota Motor North America, Inc.
TrustCare Health
Wier Boerner Allin Architecture

\$5,000 - \$9,999

Jill and Burwell Barton
Melanie and Jamey Burrow
Anne and Mike Dulske
Gail and Barry Eveland
Beth and Nick Hansen
Olivia and Jerry Host
Katherine and Robert Puckett
Janet and Charlie Spain
Blue Cross & Blue Shield of Mississippi
Butler Snow, LLP
Cathead Distillery*
Fondren Cellars*
G.I. Associates and Endoscopy Center
Heritage Properties
Howard Industries, Inc.
Jones Walker LLP
Puckett Machinery
Simmons Erosion Control, Inc.
St. Dominic Hospital
Sysco Jackson, LLC*
The Faulkner*
The Overby Company
VanDevender Family Foundation
William Goodman Art*

\$2,500 - \$4,999

Alicen and E.J. Blanchard
Gregory Boling
Margaret Oertling Cupples
Ginny DeHart and Marcello Gambino
Bettye and James Graves
Tish and Haden Hughes
Paula and Randy James
Liz and Kerk Mehrle
Ross Mitchell
Amanda and Scott Overby
Geri Beth and Allen Smith
Bethany and Lucien Smith
Rivers and Shaun Walker
Bradley, LLP
Cadence Bank

Cole Facial Clinic
Corner Market
Davaine Lighting*
EastGroup Properties
International Paper Foundation
Kerioth Corporation
Mississippi Arts Commission
Mississippi Development Authority
Monkee's of Ridgeland
Newk's Eatery
NIICA-Mississippi Chapter
River Hills Club of Jackson, Inc.*
Southern Farm Bureau Life Insurance Company
Sunbelt Sealing, Inc.
Tito's Handmade Vodka
Watkins Construction, Inc.

\$1,000 - \$2,499

Beth and John Allgood
Philip Anthony
Crisler and Doug Boone
Caroline and Jonathan Compretta
Barbara and Jason Craft
Meredith and Jimmy Creekmore
Mary Preston and John Dubberly
William Dunlap*
Lisa and John Fletcher
Susan and John Garrard
Billie and Al Green
Mamie and Jet Hollingsworth
Carter and Wilson Hood
Jeannie and Harrison Hood
Betty and Martin Jue
Madison and Houston Keyes
Sue and Peter Keyes
Nell Knox
Amy and Barton Lampton
Holly and Alan Lange
Carla and Richard Lewis
Becky and Bill Lowther
Brittany and Myer Mack

Joyce and David Marion
Cathy and George May
Lyn and David McMillin
Amber and Russell Morrison
Susan and Jason Murphy
Katie and Taylor Nicholas
Lori Quarles
Sara and Bill Ray
Donna Reiss
Lori and Randy Sanders
George Schimmel
Christina and Dustin Seanor
Sarah and Jeff Skelton
Tiffany and B.T. Steadman
Wendy and Michael Tate
Carol Tatum
Melanie and Sam Taylor
Amy and DeFord Walker
Heather and Trey Ward
Shanda Yates and Yancy Burns
Jordan and Adams Yerger
Camille and Keith Young
American Field Service Corporation
APAC - Mississippi, Inc.
A&S Interiors*
Batesville Manufacturing
Brunini, Grantham, Grower & Hewes, PLLC
Burr & Forman LLP
Capital Orthopaedic and Sports Medicine Center
Carter Jewelers*
Chad Mars, LLC*
Clinton Endodontics
CoatTails*
Community Bank
Covenant Title
Dale Partners Architects
Eagle Express Federal Credit Union
Easley Investment Groups
FORVIS
Fresh Cut Catering & Floral*
Friends of Children's Hospital

Fuse.Cloud
Gay Jones & Kuhn, PLLC
Grantham Poole CPAs
Jackson Preparatory School Foundation, Inc.
Keesler Federal Credit Union
Laws Construction
Mac's Gas
MAG CAP
Make It Pop*
Marion Counseling Services, PLLC
Matrix Solutions
McNeely Plastic Products, Inc.
Michael T. McRee Charitable Fund
Milling Pediatric Dentistry
Miskelly Furniture*
Mississippi Center for Advanced Medicine
Mississippi Forestry Association
Mississippi Sports Medicine & Orthopaedic Center
Nix Tann & Associates
Phelps Dunbar LLP
Raymond James and Associates, Inc.
Renasant Bank
Reunion Golf & Country Club*
Ross & Yerger Insurance, Inc.
Saint Andrew's Episcopal School
Skeen Plumbing and Gas, Inc.
Sledge & Company
Smith Towing Company, Inc.
The Bridal Path
The Creole Fried Chicken Company
The First, A National Banking Association
Tico's Steakhouse
Waggoner Engineering
West of Fifty Five
Sam E. and Burnice C. Wittel Foundation
Workday

MCM - MERIDIAN DONORS

THANK YOU DONORS!

Contributors to the Mississippi Children's Museum - Meridian from

JUNE 1, 2023 - MAY 31, 2024

* denotes an in-kind donation

If you wish to change your recognition, please contact us at donate@mcm.ms.

THE FOLLOWING DONORS HAVE GIVEN GENEROUSLY TO OUR ANNUAL FUND TO CONTINUE CHAMPIONING OUR MISSION. CAPITAL CAMPAIGN GIFTS ARE NOT INCLUDED IN THIS LIST.

\$25,000+

Cindy and Jim McGinnis
Earnest Workers Circle of King's Daughters and Sons
Southern Pipe & Supply Company, Inc.
The Paul & Sherry Broadhead Foundation

\$10,000 - \$24,999

1st Mississippi Federal Credit Union
APAC-Mississippi, Inc.*
Association of Children's Museums
AT&T Telecommunications
BankPlus
Baptist Anderson
Burns and Burns, Inc.
Community Bank
East Mississippi Oral & Facial Surgery
Junior Auxiliary of Meridian
Lauderdale County Tourism Commission

Magnolia Beverage Company
Magnolia Steel Co., Inc.
Meridian Coca-Cola Bottling Company
Mississippi State University Foundation via NSPARC*
Mitchell Distributing
The Phil Hardin Foundation

\$5,000 - \$9,999

Anonymous
Linda and Marty Davidson
Laura and Clay Holladay
Deanna Wilbourn
Blue Cross & Blue Shield of Mississippi
Fruge Oil Company
Great Southern Bank
Grocery Supply Company Enterprises, Inc.
Lauderdale County Schools
Mississippi Power Foundation

\$2,500 - \$4,999

David Allen
Susan and Bob Coffin
Virginia and John Gaston*
Otis Gowdy, Jr.
Lauren and Zack Tumlin*
Castle Energy Group, LLC
Community Foundation of East Mississippi
HORNE
LaBiche Jewelers*
Meridian Airport Authority
Meridian Pediatric Dental Group
Missionscape
Mississippi Arts Commission
The Lamberth Foundation of Mississippi
The Riley Foundation
Waters International Trucks

\$1,000 - \$2,499

Melanie and Ric Alexander
Patty Ann and Robert Bogue
Sheryl and Jay Davidson
Bet and Doug Deweese

Becky and Frank Farley
Bethany and Jon Flint
Elizabeth and David Honeycutt
Clair and Brad Huff
Irene T. Jones
Chris and Jim Lauderdale
Hannah and Alexander Lunn*
Jean and David Makey
Jennifer and John McRae
Jim McRae
Melanie and Manny Mitchell
Rhonda and Edward Poole
Rita and Steven Redd
Mary and Don Rogers
Karen Rush*
Hallie and Zach Swindoll
Leigha and Jeff Tate
Judy and Milburn Van Veckhoven
Betty and Richard Vise
Cheryl and Gerald Waltman
Kim and M.L. Waters
Jennifer and Buddy Webb
Anna and Daniel Wile
Sissie and Fred Wile
A & B Electric Company, Inc.

Ace Hardware Meridian*
BMW of Meridian
Bowers Auto, Inc.
Cater's Market
Charles L. Young Sr. Foundation
Citizens National Bank
Hair Queen MS Inc.
Hardy P. Graham Foundation
Hotel and Restaurant Supply
Johnson & Johnson
Ole Town Family Pharmacy
Pearson & Company Insurance
Pretty Presentations*
Saul Dermatology
Specialty Roll Products
The Citizens Bank
The Commercial Bank
Wells Fargo Advisors
Woodall Electric, Inc.
YoungWilliams



TO VIEW A FULL LIST OF DONORS SCAN THE QR CODE!

MCM - JACKSON'S FALL CALENDAR

Please note that these dates and events take place in Jackson, MS.

SEPT

- 19 C3jr Coding Challenge
- 20 Field Trip Friday
- 20 Pawns and PJs & Science Girl Demo
- 21 Mississippi Science Fest

OCT

- 14 MAGIC MONDAY
- 19 MISSISSIPPI CHILDREN'S boo.seum
- 25 PARK AFTER DARK

NOV

- 23 A Very Merry Night
- 24 Journey to the North Pole Opens
- 25-27 Gratitude Days

DEC

- 6 Jammies at Journey
- 6 Rooks & Reindeer
- 31 NOON YEARS EVE!

JAN

- 5 Journey to the North Pole Closes
- 18 STORYTELLING FESTIVAL
- 20 MAGIC MONDAY

MCM IS ATTENDING THE MS BOOK FESTIVAL!
JOIN US ON SEPTEMBER 14

JACKSON SENSORY DAYS: 4th Sunday of every month 11 am - 1 pm



WINTER CAMP!

Jackson Winter Camp: Dec 23, 27, 30, Jan 2 and 3
Meridian Winter Camp: Nov 25 & 26, Dec 23, 27, 30, Jan 3

MCM - MERIDIAN'S FALL CALENDAR

Please note that these dates and events take place in Meridian, MS.

SCIENCE SATURDAY

- 19 C3jr Coding Challenge
- 20 Field Trip Friday
- 21 Science Saturday
- 28 Chess Tournament

MAGIC MONDAY

- 7 MAGIC MONDAY
- 14 MAGIC MONDAY
- 19 MISSISSIPPI CHILDREN'S boo.seum

WINTER WONDERLAND

- 23 Winter Wonderland Opens
- 25-27 Gratitude Days

PEPPERMINT & PJS

- 6 Peppermint & PJs
- 14 Merry at the Museum Adults Only Event
- 31 NOON YEARS EVE!

WINTER WONDERLAND CLOSING

- 5 Winter Wonderland Closes
- 20 MAGIC MONDAY
- 25 STORYTELLING FESTIVAL

Join us for special Magic Mondays:
Meridian only - Oct. 7
Both Museums - Oct. 14th, Nov. 25, and Dec. 23 & 30



Both museums will be closed for the holidays! Closed on November 28, December 24, 25, & January 1
Dates and events are subject to change. Visit mschildrensmuseum.org and mcmmeridian.org for an up-to-date schedule.



Mississippi Children's Museum



@mschildsmuseum



@mschildsmuseum



@mcmmeridian



@mcmmeridian



@mcmmeridian

Mississippi Children's Museum • 2145 Museum Boulevard,
Jackson, MS 39202 | Phone: 601.981.5469 | Email: info@mcm.ms

Mississippi Children's Museum - Meridian • 403 22nd Avenue South,
Meridian, MS 39301 | Phone: 601.512.0270 | Email: meridian@mcm.ms