



THE MCM PLAYBOOK

FALL 2023 • VOLUME 8 • ISSUE 2

MS
SCIENCE FEST
.....
A HEALTHY YOU
.....
HOLIDAY
HAPPENINGS



little MINDS, big DREAMS

The Mississippi Children's Museum knows how to dream big. From the beginning, MCM started as a dream from leadership who had a vision to bring world-class educational experiences to children in our state. When MCM-Jackson opened in December 2010, this dream became a reality, but we didn't stop there. We continued to dream bigger.

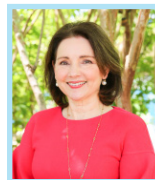
Since opening, we have welcomed over a million visitors and celebrated many success stories. MCM expanded its statewide reach by opening its first satellite museum, MCM-Meridian, in 2021. Later that same year, MCM played a pivotal leadership role in opening a state-of-the-art 30,000 square-foot playground in the LeFleur's Bluff Education and Tourism Complex. As we look to the future, MCM's dreams involve taking the online resources of The LIFT (Learn. Inspire. Fulfill. Teach.) and developing a physical space to elevate the profession of teaching by giving the tools and confidence to incorporate STEAM in everyday curriculum.

MCM strives to be a valuable resource for caregivers and influence children's lives from birth, with our signature campaign, Talk from the Start, and loveable mascot, Rocky the Reader; and through a national program, Reach out and Read, in partnership with the University of Mississippi Medical Center.

MCM's afterschool program, Launch into Learning, provides an imaginative space for children Pre-K to 5th grade during afterschool hours, and gives working parents peace of mind that their children are safe and cared for. The program consists of educational programming, free play in the museum, snacks, and mentorship from certified staff with backgrounds in education.

As our dreams turn into reality, we continuously aspire to dream bigger, because we know dreams are what create a healthy, educated, and bright future for our children.

Gratefully,



Susan Garrard,
Mississippi Children's Museum President/CEO

Nonprofit Organization
U.S. Postage
PAID
Jackson, MS 39201
Permit No. 219



TABLE OF CONTENTS

3	MS Science Fest
4	New Exhibits
5	A Healthy You
6	Educational Experiences
7	MCM Faces
8-9	MCM at Home
10	What's New
11-12	Holiday Happenings
13	MCM Partners
14-15	MCM Donors
16	Calendar

The MCM Playbook
Fall 2023 Volume 8 Issue 2

Published By: Mississippi Children's Museum

Editors: Angela Mitchell & Clara Williams
Contributors: Tracy Pitts, Rebecca Parker, MCM & MCM-Meridian Staff
Graphic Designer/Photographer: Haleigh Collins

2023-2024 MCM Board of Directors
Beth Hansen, Chairman, Alicen Blanchard, Michael Cormack, Terry Dale Cruse, Margaret Cupples, Lisa Didion, John Fletcher, Otis Gowdy, Jr., Jeffrey Graves, Amanda Green, Jetson Hollingsworth, Wilson Hood, Olivia Host, Maggi Lampton, Carla Lewis, Ashley Meena, Melanie Morgan, Amanda Overby, Chip Pickering, Adams Yerger, IV, Camille Young

Board Emeritus
Donna Bruce, Martin Jue, & Judge James Graves

Ex-Officio Member
Susan Garrard, President/CEO

MCM-Meridian Advisory Committee
Otis Gowdy, Chairman, Hallie Pearson Swindoll, Secretary, John Anderson, Patty Ann Bogue, Amy Carter, Beth Clay, Terry Dale Cruse, Veldore Young Graham, David Hall, Kelvin Jackson, Asif Lala, Dustin Markham, Jim McGinnis, III, Melanie Mitchell, Chris Phillips, Don Rogers, Wade Sims,

Ex-officio Members
Captain Luke Davis, Colonel Cindy Smith, Barbara Zeller, MCM-Meridian Executive Director



THE MISSISSIPPI CHILDREN'S MUSEUM IS HONORED TO BE RECOGNIZED AS THE #4 BEST CHILDREN'S MUSEUM IN THE COUNTRY AS PART OF USA TODAY'S ANNUAL 10BEST READERS' CHOICE AWARDS.

"It is an honor to be recognized as one of the best children's museums in the country," said Susan Garrard, MCM President, "MCM is the state's largest educational institution for children and provides a safe, imaginative space for children and families of all backgrounds to play, learn, and grow. To be recognized nationally is a testament to our steadfast commitment to provide excellence and unparalleled experiences to our visitors."



9.16.23

DISCOVER. EXPLORE. IMAGINE.

Explore all four museums in the LeFleur Museum District for one low ticket price of \$10! Purchase tickets at

MISSSCIENCEFEST.ORG

The Mississippi Science Festival (MSF) is the LeFleur Museum District's (LMD) signature event presented by C Spire, which will take place on September 14-16, 2023.

MSF brings the community together to celebrate careers in STEAM (science, technology, engineering, art, and math), and has introduced children of all ages to the wide variety of STEAM concepts and industries that are available in Mississippi. Events will take place over three days, in both the LeFleur Museum District in Jackson and at the Mississippi Children's Museum - Meridian (MCM-Meridian). Saturday's festival is open to the public and participation is encouraged statewide.

THURSDAY

C3 JR. CODING CHALLENGE (PRE-REGISTERED EVENT)
SCIENCE AFTER HOURS

FRIDAY

FIELD TRIP FRIDAY
PAWNS N' PAJAMAS (MCM-JACKSON ONLY)

SATURDAY

MISSISSIPPI SCIENCE FESTIVAL

For this special event, the LeFleur Museum District in Jackson offers admission to four museums for one ticket price of \$10. This year's event will feature four special guests to bring an interactive and fun element to the festival.

10:00 a.m. - "Science of Roller Derby" by JXN Roller Derby featuring neuroscientist and skater, Dr. Liz-Engler Chiurazzi
11:00 a.m. - "Science in Your Own Back Yard" by Magician Tommy John in the Science Museum's Rotwein Theatre
1:00 p.m. - "Science of Flight" in Ag Aviation at the Ag Museum
2:00 p.m. - "Science of Play" by Magician Dorian LaChance at MS Sports Museum

SCIENCE SATURDAY IN MERIDIAN

The Mississippi Children's Museum - Meridian is celebrating STEAM in conjunction with the Mississippi Science Festival on September 16th from 10:00 a.m. - 3:00 p.m. Science Saturday offers a nurturing environment that inspires children and families to explore STEAM concepts and uncover possible careers in Mississippi. Families are invited to engage with Mississippi's leaders in STEAM and participate in educational, hands-on activities and interactive exhibits throughout the day.



THE LEFLEUR MUSEUM DISTRICT UNVEILS A NEW LOOK!

The new logo and brand reflect the unity of four unique museums offering diverse experiences for all ages.

Discover interactive exhibits. **Explore** educational experiences. **Imagine** the things you'll learn, the fun you'll have, and the memories you'll make. Plan your visit to LeFleur Museum District today!

Visit our NEW website and purchase a District Pass, which saves guests 25% off regular admission to all 4 museums in the district.



FROM DREAM TO REALITY

KAREEM'S DREAMY DAY

Kareem's Dreamy Day is designed with home in mind as it teaches guests how to live holistically healthy lifestyles from the moment they wake, to the moment they lay down to dream. The design of Kareem's house reflects local elements prevalent in traditional homes of the region, immersing young visitors in both a visual and educational environment. Within Kareem's house, children can find engaging exercise videos promoting a healthy lifestyle, encouraging visitors to stay active and embrace wellness as an essential aspect of their daily lives. Through Kareem's Dreamy Day exhibit, children also learn about the significance of sleep and healthy routines, as they explore Kareem's daily schedule, emphasizing the importance of restful nights and balanced living.



RIDE THE TRAILS

MCM's new health exhibit, Ride the Trails, is designed to teach children about physical exercise, heart health, and outdoor activities you can do in your community. Children are invited to embark on an adventure with Rocky the Reader by pedaling through three immersive, local bike trails. This exhibit aims to promote physical exercise and general health awareness among children and families. Research published in the Archives of Disease in Childhood emphasizes the importance of physical activity for children, not only for fitness, cardiovascular health, and weight control, but also for sleep. It was found that children who are physically active during the day fall asleep faster and sleep longer than those who are less active.



MUSIC, MOVEMENT, AND YOU

Music, Movement, and You is a new experience in the Express Yourself gallery, which works to foster a love for movement and harness the many health benefits of dancing. In this exhibit, guests are guided on screen to dance along with popular songs on a custom stage designed by MCM's exhibit and marketing teams. While engaging with this exhibit, guests can learn about various forms of expression and movement, such as music, spoken word, dance, and acting, which naturally promote physical activity in a fun, interactive environment.



EXPLORE MCM-MERIDIAN'S NEW FALL AND WINTER EXHIBIT, CELEBRATIONS: ASIAN CULTURE!

Celebrations: Asian Culture is designed to bring children and families together to explore New Year celebrations in South Korea, China, and Vietnam through the imagery of fireworks, lanterns, lotuses, and kites. Children can participate in activities such as drumming, dancing, and storytelling. From telling the Nian Monster story in a small theater to discovering different dishes served for breakfast as an eye spy game, children and families will be captivated by the rich history, beauty, and fun of these Asian New Year festivals.

Made possible by



DREAMING OF A HEALTHY YOU

Health and nutrition are one of MCM's primary initiatives. We incorporate health education into our exhibits, programs, and events. Our dream is that every child who visits the museum will learn something new and incorporate healthy habits into their daily lives. We asked a few of our health partners to share advice on how to live a healthier life!

JACKSON HEART FOUNDATION

Did you know that only about 1 in 4 children get the recommended 60 minutes of physical activity per day? Make physical activity fun! Fun activities can range from team or individual sports to recreational activities such as walking, running, skating, bicycling, swimming, playground activities, or free-time play. Young children love to play and be active. Encouraging lots of safe and unstructured movement and play can help build a strong foundation for an active lifestyle.

5 fun tips to promote physical activity in your family:

- Encourage bike rides outside after school or on the weekends.
- Walk, skip, or run up and down your street after dinner.
- Try 20 jumping jacks and 2 minutes of stretching before bed.
- Animal Races: Hop like a bunny or frog; squat and waddle like a duck; flap your wings like a butterfly; slither and wiggle like a snake, and so on.
- Meet a friend at the LeFleur's Bluff Playground for a playdate or explore the Museum Trail on your bike, scooter, or skates.

Morgan Geary, Executive Director, Jackson Heart Foundation

FIRST TEE OF CENTRAL MISSISSIPPI

At First Tee of Central Mississippi, we see golf as a unique metaphor for life - full of unexpected challenges, where progress is a practice of self-reliance, and how you choose to respond defines who you are. We are leveraging this as a powerful vehicle, but do not define our success by how well youth play the game. We believe in developing experiences that are just as fun as they are meaningful, where kids feel excited to grow, safe to fail, and better equipped for whatever comes their way next.

When they step up to the next shot, the next math test, the next presentation, the first day at a new school -- they have the strength to move forward, aim further, and finish stronger than the last time. No matter the course, we grow from the challenges we face on it.

Margo Coleman, Executive Director, First Tee of Central Mississippi



MOLINA HEALTHCARE

Studies show that families that share meals together live longer and stay healthier. It is beneficial for children to have the opportunity to share what happened in their day with their families, as well as hear their loved ones talk about their family history and stories about their childhood. These conversations can improve children's vocabulary and reading skills.

To promote conversation, consider these tips:

- Ask about your child's day and show interest in their daily life.
- Discuss age-appropriate news and current events.
- Be a good listener and encourage your child to listen, as well.

Having dinners at home is also beneficial for children to develop healthy eating habits. When children get involved in meal preparation, they are more inclined to eat the dishes they have helped prepare!

Laurie R. Williams, J. D. | AVP, Member Growth and Engagement
Molina Healthcare of Mississippi, Inc.

HAPPY HEALTHY FAMILIES

Over the summer, MCM-Meridian hosted 25 families for its second annual Happy Healthy Families program sponsored by Molina Healthcare. Children and their caregivers enjoyed dinner and themed programming focused on social and emotional wellness, nutrition, and physical health, with literacy being a foundational piece of each session. After completing the program, participating families were provided a complimentary one-year membership to the museum.



EXHIBIT SPOTLIGHT

GOODNIGHT MOON

Learn healthy bedtime routines in MCM-Meridian's Goodnight Moon Exhibit! Based on the children's classic book series, children can learn the importance of sleep in a fun, hands-on environment.

WONDER OF WELLNESS

In this traveling exhibit, learn how a good night's sleep is linked to healthy brain development. Bring this exhibit to your school or organization by requesting a booking for MCM Travels online at mcm.ms.



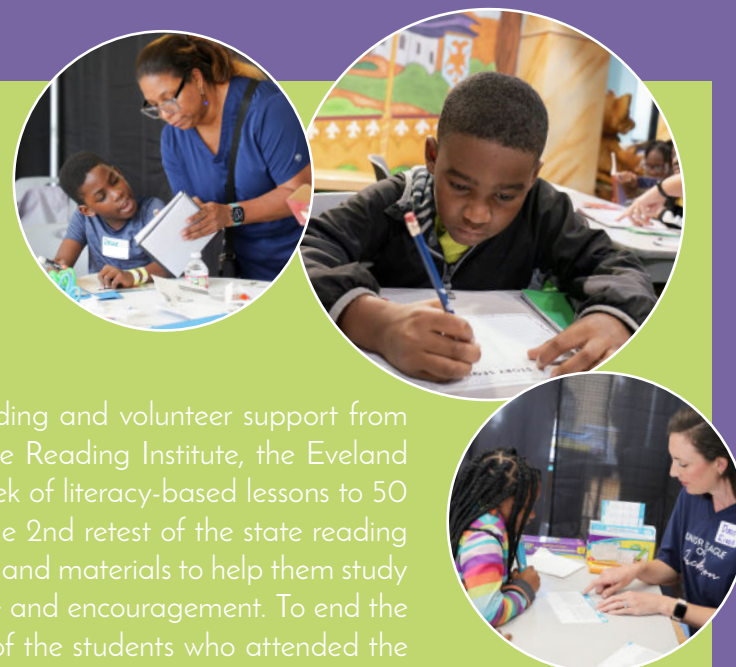
LITTLE LEARNERS, BIG DREAMERS



For every one child in an afterschool program, there are three more without a safe place to go each day after school. MCM created Launch into Learning to help meet the needs of working parents in search of a quality program and safe space for their children, as well as provide children with the social and emotional support they need as they navigate through school and life. This school year, we will continue with the program at MCM-Jackson and launch a new program at MCM-Meridian. This year's program will serve students in the Jackson Public School District and Meridian Public School District. Students will participate in literacy, STEAM, P.E., social-emotional programming, tutoring, and museum play, Monday through Friday. MCM is committed to supporting children socially, emotionally, and academically as they dream big and discover their gifts, talents, and passions!

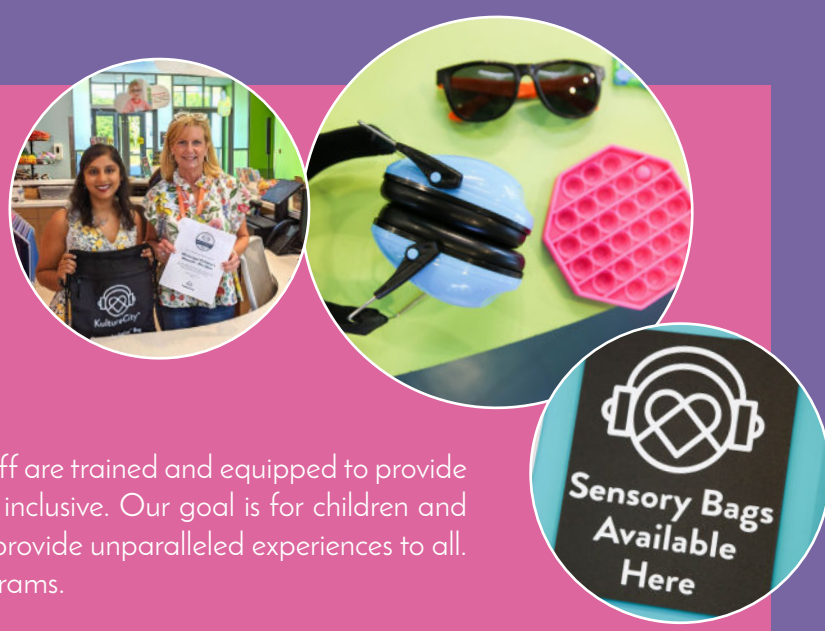


MCM-Jackson's Read to Succeed camp was held June 12-16th. Through private funding and volunteer support from donors across the state including Regions, CenterPoint Energy Foundation, Barksdale Reading Institute, the Eveland Family Foundation, and the Junior League of Jackson, MCM is able to provide a week of literacy-based lessons to 50 students in the Jackson Public School District. The camp helps prepare students for the 2nd retest of the state reading test. Students received intense reading instruction from certified staff, literacy resources and materials to help them study at home, as well as breakfast, lunch, and a snack. Most importantly they received love and encouragement. To end the week, campers celebrated their hard work with pizza, snow cones, and games! Out of the students who attended the camp, 60% showed improvement when testing, and 40% passed the test, moving them onto the 4th grade. MCM's Read to Succeed camp helps students pursue their dreams, reach their full potential, and grow academically.



KULTURE CITY

MCM is proud to be sensory certified by Kulture City! Through this certification, staff are trained and equipped to provide our guests who face invisible disabilities with an experience that is accessible and inclusive. Our goal is for children and families to know that we are committed to learning and growing in our mission to provide unparalleled experiences to all. Please check the event calendar on our website for special sensory days and programs.



FIELD TRIPS TO MCM - JACKSON & MCM - MERIDIAN

Field trips to MCM promote hands-on, inquiry-based learning that fosters valuable critical thinking skills.

- Group visits are available for groups of 15 or more children
- Group visits are available weekdays only
- Standard group visits are two hours
- Tickets are \$5 per student
- Slots are filling up fast, reserve your spot today!



F₄ A₁ C₃ E₁ S₁ OF MCM



ASHLEIGH JOHNSON, MCM VOLUNTEER OF THE YEAR

Ashleigh Johnson has been volunteering at MCM for two years. She is a student at Terry High School and has an interest in pursuing a career in STEAM. "MCM has provided a welcoming environment that makes volunteering here enjoyable," says Johnson, "Volunteering at MCM has helped me acquire leadership skills by engaging with guests and campers. Everyone has a childhood, and it's a joy to be able to make someone's childhood great."

SUSAN COFFIN, MCM DUAL MEMBER

Susan Coffin and her family have been dual members since MCM-Meridian opened in 2021. While Susan and her husband live in Meridian, their four grandchildren live in Jackson, which makes dual membership very convenient for their family to visit either museum multiple times throughout the year.

In addition to being a museum member, Susan also serves in many capacities to support the museum. As an MCM-Meridian Partner, she volunteers to help with programs and events, such as Happy Healthy Families and Fall Fix Up.

Susan shares that she believes MCM is important for our children and our communities. "Fostering the next generation of great minds starts with a playful environment," says Susan, "At both museums in Jackson and Meridian, children are provided the opportunity to practice and refine their memory, sensory, and fine motor skills, while also exploring the rich history and landscapes that our state has to offer."

MCM's members are a crucial piece to the museum's success. Dual membership is a great way to support both MCM-Jackson and MCM-Meridian. You can become a dual member for an additional \$50 added to your current membership.



MS. HELEN CLARK, BIRTHDAY PARTY GUEST AT MCM-MERIDIAN

Ms. Helen Clark Thomas celebrated her 104th birthday at the Mississippi Children's Museum - Meridian in July! Surrounded by loved ones, this remarkable celebration was a testament to the fact that no matter our age, we all have an inner child within us.

DR. AMY CARTER, MERIDIAN SCHOOL DISTRICT SUPERINTENDENT

Meridian Public Schools (MPS) has been a steadfast supporter of MCM-Meridian since the beginning. MCM-Meridian is honored to have MPS as a Partner in Education, as well as offering professional development for teachers, field trips for students, and having MPS Superintendent, Dr. Amy Carter, serve on the MCM-Meridian Advisory Committee.

"At the Meridian Public School District, we continue to be amazed by the experiences provided by the Mississippi Children's Museum - Meridian," says Dr. Carter, "We believe that the inquiry-based learning experiences they provide are a great asset to the youth and families of our community. We are proud to continue to grow our partnership and together help nurture a love of learning for those we serve."



LITERACY : DREAM JOURNAL

WHAT IS DREAM JOURNALING?

Dream journaling means writing down everything you can remember as soon as you wake up. Have you ever remembered a dream perfectly when you woke up, but forgotten it bit by bit as the day passed? This practice helps you keep all those details in your journal so you can read them again later.

WHAT ARE THE BENEFITS OF DREAM JOURNALING?

Did you know that the more you write your dreams down and try to remember details, the better you will get at remembering your dreams? When you exercise this part of your brain, you strengthen it, just like when you exercise your muscles to get stronger! Keeping a dream journal can help you notice patterns in your dreams, but it can also be inspiration for drawings, stories, and comics! Grab an empty notebook or journal and use the prompts below to write down any dreams you remember in the morning. Then see what kind of stories you can create from your dreams!

- Where were you in your dream?
- Who else was in your dream?
- What happened in your dream?
- What do you think would happen next in your dream?
- Have you ever had this dream before? What was different? What was the same?
- Draw or paint what you can remember from your dream.

Practice dream journaling every morning and see what kind of stories you can build. How can you use your dreams to create characters, settings, and more?



ART : STARRY NIGHT

DID YOU KNOW...

- Vincent van Gogh only worked as an artist for ten years, but in those ten years he created more than 850 paintings. That's at least 85 paintings a year!
- Van Gogh painted *The Starry Night* while looking at the view from his window. He applied oil paint directly to his canvas from the tubes to create thick lines and bright colors.
- When Van Gogh finished *The Starry Night*, he thought it was a failure! Now it is one of the most famous pieces of Western art.

The Starry Night feels kind of like a dream. Follow the instructions below to create your own version of *The Starry Night*. What might you see out your window at night that you could add to your painting?

The Starry Night - Fork Painting

1. Choose the colors you want to use for your painting. Do you want to use blue, black, and yellow like Van Gogh did, or do you want to try a whole new color scheme?
2. Van Gogh used thick lines and many layers of paint. Don't be shy laying paint down on your paper!
3. After you are happy with the colors on your page, try using a fork to create the lines and swirls that you see in *The Starry Night*. How many different shapes and textures can you make?

The Starry Night - Foil Painting

1. Cover a piece of cardboard with foil. Make sure you smooth down the front (carefully, don't tear it!), and tape it to the back so it stays on the cardboard.
2. This time try using a Q-tip to paint on the foil. How do the lines look different from your last painting? Are the lines thicker or thinner? Are they smoother or rougher? How does painting on foil feel and look different from painting on paper?



HEALTH : GEOCACHING

GEOCACHING:

Geocaching is the world's largest treasure hunt! This is a real-world, outdoor adventure that is happening all the time, all around the world. All you need is a device with the Geocaching app (or a good GPS), and a pen or pencil. Additionally, you may want to bring supplies like bug spray, sunscreen, water, and a few little trinkets to trade!

HOW DO YOU GEOCACHE?

Now that the seasons are changing and the weather will get cooler, Geocaching is a great opportunity to get outside and explore. Make sure you have someone with you—never go Geocaching alone! It's always safer to do outdoor activities with friends. You can use the Geocache app to find the coordinates of the closest Geocache to you. Follow the GPS on your screen until you find the area where it is hidden. But the hunt isn't over! Usually Geocaches are cleverly hidden. You can't just walk up and find one! They may be hidden in a hollow tree, disguised by leaves, attached under a park bench with a magnet, or even hung from a branch or fence with fishing wire!

WHAT DO I DO WHEN I FIND ONE?

Congratulations! You've found a Geocache! But what now? Open the Geocache, which may be as small as a film canister or as large as a Tupperware storage container! Small Geocaches usually just have a paper log that you can sign with your name and the date that you found it. Really tiny Geocaches can't even fit a pen, which is why you should bring your own! Larger Geocaches usually have small trinkets inside that you can take with you. But remember, if you take something, make sure you leave something, too!

NOW WHAT?

When you're finished signing the logbook and you have decided if you want to take a trinket with you, make sure that you hide it exactly as you found it. You want the next person to have the same adventure as you, so be sure you don't leave it out where just anyone can find it! Treat the area kindly and respect the nature around you. If you want to take it a step further, ask your adult to help you check off the Geocache on the app. This will keep track of the ones you've found, and you can make it a goal to find all the Geocaches in your area!

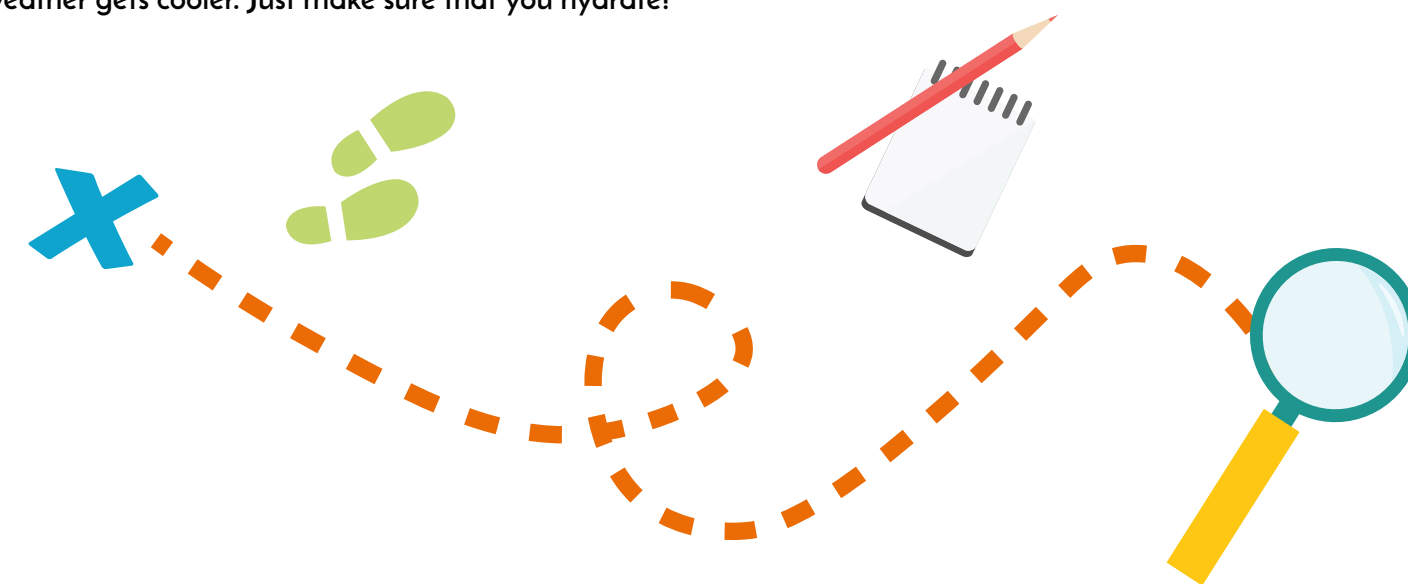
DID YOU KNOW?

We have Geocaches hidden at both MCM locations! We created our own Geocaches in Jackson and Meridian this summer, and they are hidden somewhere on the campus! Here's a hint: You don't actually have to enter either museum to find them (although we do recommend coming inside to cool off and tell us about your treasure hunt!)

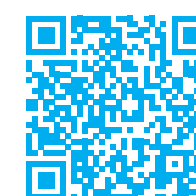
HEALTH BENEFITS:

There are several awesome benefits to Geocaching! What other benefits can you think of?

- Even though you use an app to find Geocaches, this activity still gets you outside and away from television, video games, and other stressors. Remember to take a moment after you find a Geocache to appreciate the scenery around you, the adventure you are on, and the beauty of being outside!
- Learning a new skill, especially one as exciting as a worldwide treasure hunt, can lift your mood. It gives you a boost of dopamine, which is the chemical your brain releases that makes you feel happier!
- Geocaching sharpens your skills. Challenging your mind with puzzles and problem solving helps keep your mind strong. When you lift weights, your muscles get stronger. Think about problem solving as your brain's way of lifting weights!
- Getting outside and exploring is good for your physical health. You will end up walking, hiking, and working up a good sweat, even as the weather gets cooler. Just make sure that you hydrate!

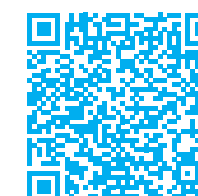


APPLE:



DOWNLOAD THE
GEOCACHING APP!

ANDROID:



SHARE PICTURES OF YOUR MCM AT HOME ACTIVITIES
ON SOCIAL MEDIA! MAKE SURE TO TAG US:



NEW ADDITIONS AT THE LEFLEUR'S BLUFF COMPLEX (LBC)



BUTTERFLY MURAL

A new artist metal mural has been added to both sides of The Den, an outdoor pavilion in the LBC visible from I-55. The abstract artwork comprised of butterflies and colorful hexagons is a perfect backdrop for a family photo while visiting LeFleur's Bluff Playground. The metal mural was designed by Jake Gartman, architect at Wier Boerner Allin and installed by Mitchell Signs.



BUTTERFLY BENCHES

New decorative park benches shaped like colorful butterflies have been installed along Spotter's Adventure Trail. Rocky the Reader tested them for quality assurance, and they passed the test!

Coming soon: new landscaping featuring a scenic pathway of 100 Magnolia trees and other native plant species, as well as additional parking and a picnic area.

LeFleur's Bluff Playground, Spotter's Trail, and The Den are free and open to the public seven days a week.



THE NEW AND IMPROVED SELA WARD PARKWAY - MCM-MERIDIAN

Interstate drivers entering Meridian are greeted by the recently revitalized Sela Ward Parkway. The area boasts beautiful landscaping, paved sidewalks, repaved roads, and a welcoming entry point to a range of attractions, including the Mississippi Children's Museum - Meridian. With enhanced pedestrian access, visitors can conveniently walk between nearby attractions and the bustling downtown area. Come explore MCM-Meridian and neighboring attractions, including The MAX!

PLAN YOUR VISIT:



Join us for these **SPOOKTACULAR** events this fall!

**MISSISSIPPI
CHILDREN'S
boo!seum**

**SATURDAY, OCTOBER 21
10AM - 3PM**

Join us in costume at the Mississippi Children's Boolseum in both Jackson and Meridian for a day full of spooktacular science, fall festival games, and creepy-crawly crafts!

JACKSON & MERIDIAN

**FRIDAY, OCTOBER 27
5:30 PM - 8:30 PM**

Dress up in your favorite costume and head to the Mississippi Children's Museum - Jackson and MDWFP's Museum of Natural Science for the annual Park After Dark event! You'll find spooky science and fantastic family fun activities at this special evening event. Easily travel between both museums and the LeFleur's Bluff Playground using Spotter's Adventure Trail. Enjoy admission to both museums for one ticket price of \$12!

JACKSON

**PARK
AFTER
DARK**



Holiday Happenings

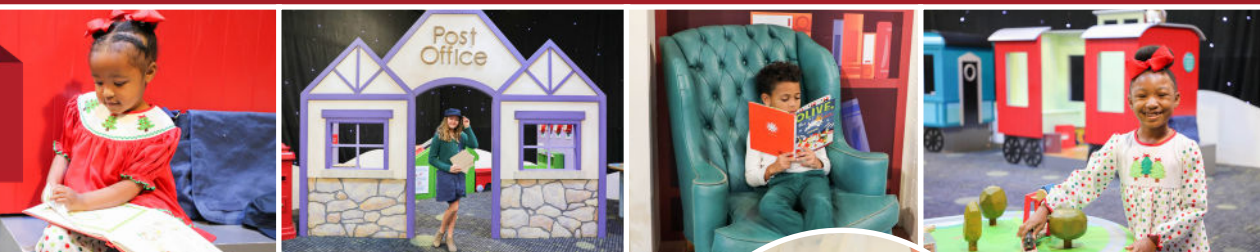


JOURNEY TO THE NORTH POLE

NOVEMBER 19 - JANUARY 7

This one-of-a-kind holiday experience transforms MCM into a magical winter wonderland with twinkling lights, train cars, and a child-sized post office where you can write letters to Santa. Glide around the Reindeer Rink in your favorite pair of festive socks, ride our thrilling 45-foot Snowflake Slide, and cozy up by the fire inside Eudora Welty's living room!

JACKSON



JAMMIES AT JOURNEY DECEMBER 1 | 5:30 PM - 7:30 PM

Guests are invited to wear their favorite pair of holiday jammies and coziest pair of socks to an after-hours Jammies at Journey event at MCM-Jackson. Enjoy festive educational programming and create magical memories at Jackson's ultimate holiday exhibit, Journey to the North Pole.

JACKSON

REINDEER WORKSHOPS JACKSON MERIDIAN

Don't miss your chance to attend one of our popular Reindeer Workshops this holiday season! Participants can choose their own fabric and accessories, sew a stylish sweater, and enjoy cookies and hot cocoa. Each reindeer comes with a birth certificate and pet carrier!



WINTER WONDERLAND

NOVEMBER 18 - JANUARY 7

Step into Winter Wonderland at the Mississippi Children's Museum - Meridian to experience holiday magic! From November 18 - January 7, MCM-Meridian will offer a variety of holiday activities including story time with Santa, sock skating in the Snowflake Village exhibit, cookie decorating workshops, festive photo ops, and much more.

MERIDIAN



PEPPERMINT & PJS DECEMBER 1 | 6 PM - 8 PM

Celebrate the holiday season during Peppermint & PJs, an exclusive after-hours event for museum members. In your most festive pair of pajamas, join us at the museum for holiday crafts and activities, milk and cookies, and the chance to share your holiday wishes with Santa Claus!

MERIDIAN



NOON YEAR'S EVE

DECEMBER 30 | 10 AM - 1 PM

Celebrate Noon Year's Eve in both Jackson and Meridian, while you ignite your creativity and invigorate your dreams for the new year surrounded by family and friends. Dance to catchy melodies, create festive party hats, and gather for a burst of confetti and balloon drop as the clock strikes noon!

JACKSON & MERIDIAN

*MCM-Meridian's Noon Year's Eve is sponsored by Community Bank.



GIVE THE GIFT OF IMAGINATION THIS HOLIDAY

Dreaming of a unique gift for your children this holiday? Visit MCM's Trading Post in Jackson and Meridian!
-Shop our innovative and fun toy selection
-Complimentary gift wrapping and convenient curbside pickup upon request
-Gift certificates and memberships make the perfect holiday gift!



UPCOMING SALE!

Nov. 24 & 26
25% Off Select Items

MCM Partners

THANK YOU TO OUR NEON NIGHT 2023 COMMITTEE!



NEON NIGHT

Over 500 guests danced the night away under neon lights at MCM Partners' signature summer event, Neon Night in Jackson! Thank you to our Neon Night Committee and our presenting sponsor, Trustcare, who helped make this event a grand success. In combined efforts from generous sponsors, event hosts, silent auction, and guests, this year's Neon Night fundraiser contributed over \$100,000!

JACKSON



PRESENTED BY Citizens National Bank



MINGLE AT THE MUSEUM

Over 200 guests joined us for our signature summer fundraiser, Mingle at the Museum, featuring live music, tasty food truck bites, cold drinks, entertaining carnival games, and more. Through our 50/50 raffle, pay-to-play games, event tickets, and sponsorships, this event raised over \$15,000. This incredible night would not have been possible without the support of our sponsors, guests, volunteers, and staff. Thank you to all who played a part in helping us reach our fundraising goals to support the mission and vision of MCM-Meridian!

MERIDIAN

A VERY MERRY NIGHT

NOVEMBER 18 | 6 PM - 9 PM

A Very Merry Night is MCM Partners' family fundraiser that serves as the premiere holiday event of the year by taking place on the opening night of MCM's popular holiday exhibit, Journey to the North Pole in Jackson

FEATURING : Live DJ, Photos with Santa, Adult Beverages, Dinner Buffett, and Candy Bar, Holiday STEAM Programming

JACKSON



MERRY AT THE MUSEUM

SATURDAY, DECEMBER 9 • 7 PM - 11 PM

Bring on the holidays at the inaugural Merry at the Museum celebration presented by BankPlus! This December, join us for an evening of glimmer and glee as we spark the holiday spirit. From festive live music and enchanting performances to mouth-watering bites and elevated cocktails, you won't want to miss this opportunity to make-merry and celebrate the season. Dress to impress and join us for an unforgettable night of festive fun!

MERIDIAN



IGNITE THE NIGHT - MCM-JACKSON
Save the date for a Lunar New Year celebration!
Saturday, February 10



LOVE BUG BOOGIE - MCM-MERIDIAN
Save the date for a family Valentine's dance!
Friday, February 9

MCM STATEWIDE DONORS

THANK YOU DONORS!

Contributors to the Mississippi Children's Museum from
JUNE 1, 2022 - MAY 31, 2023

* denotes an in-kind donation

If you wish to change your recognition, please contact us at donate@mcm.ms.

\$25,000+

Anonymous
Atmos Energy Corporation
Barksdale Reading Institute
Blue Cross & Blue Shield
of Mississippi
C Spire Foundation
Ergon Foundation, Inc.
Institute of Museum and
Library Services
Jackson Heart Foundation
Mississippi Arts Commission
Nissan North America, Inc.
Regions Foundation
The Luckyday Foundation
Trustmark
W.K. Kellogg Foundation

\$10,000 - \$24,999

Frieda and Joe Lauderdale
Ashley and Hu Meena
BankPlus
Beckham Jewelry*
CenterPoint Energy
Eaton Corporation
Feild Co-Operative
Association, Inc.
Henry and Martha
Hederman Charitable
Foundation
Hinds Behavioral Health
Services
Kroger
Marion Counseling Services,
PLLC
Regions Bank

Telos Foundation
The Fountain Family
Foundation
The Mapp Family
Foundation
Toyota Motor North
America, Inc.

\$5,000 - \$9,999

Melanie and Jamey Burrow
Gail and Barry EVELAND
Olivia and Jerry Host
Amanda and Scott Overby
Donna Reiss
Patti Reiss
Anna and Jay Stroble
Howard Industries, Inc.
Mississippi Sports Medicine &
Orthopaedic Center
Puckett Machinery
St. Dominic Hospital
Simmons Erosion Control, Inc.
The Faulkner*
William Goodman Art*

\$2,500 - \$4,999

Karen and Charles Bush
Bettye and James Graves
Betty and Martin Jue
Katherine and Robert
Puckett
Janet and Charlie Spain
Carol Tatum
Butler Snow, LLP
Cole Facial Clinic*
Corner Market
Davaine Lighting*

EastGroup Properties
International Paper
Foundation
Jones Walker LLP
Mississippi Development
Authority
Sunbelt Sealing, Inc.
Tito's Handmade Vodka

\$1,000 - \$2,499

Anonymous
Gregory Boling
Holly and Brooks Buchanan
Barbara and Jason Craft
Amberly and Matthew
Collins
Gloria and John Corroero
Meredith and Jimmy
Creekmore
Betsy and Wade Creekmore
Margaret O. Cupples
Mary Preston and John
Dubberly
Lisa and John Fletcher
Susan and John Garrard
Beth and Nick Hansen
Margaret and James Hays
Emily and Kern Hoff
Jeannie and Harrison Hood
Betsy and Stewart Hood
Carter and Wilson Hood
Tish and Haden Hughes
Paula and Randy James
Brittany and Myer Mack
Joyce and David Marion
Cathy and George May

Liz and Kerk Mehrle
Amber and Russell Morrison
Katie and Taylor Nicholas
Mike McRee
Lori Quarles
Sara and Bill Ray
Lori and Randy Sanders
George Schimmel
Sarah and Jeff Skelton
Bethany and Lucien Smith
Kaitlyn and Jason Vassar
A&S Interiors*
Align IT Group
Bossier & Associates
Brunini Law Firm
Cadence Bank
Carter Jewelers*
Chad Mars, LLC*
Club4 Fitness
Community Bank
Community Foundation
for Mississippi
Eagle Express Federal
Credit Union
Empower Children's Clinic
Gilchrist Donnell, PLLC
Matrix Solutions
McNeely Plastic Products,
Inc.
Miller Lumber Sales
Mississippi Forestry
Association
Phelps Dunbar LLP
Pileum Corporation
Porter & Malouf
Ross & Yerger Insurance, Inc.
William Dunlap*



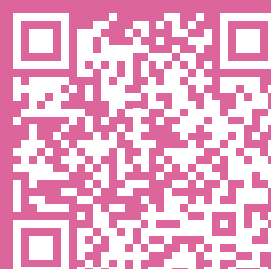
ONE DREAM, MANY HANDS

YOU MAKE OUR DREAMS COME TRUE!

We cannot dream big without the generosity of our community! Your gifts ensure that we can continue to create unparalleled experiences that inspire excellence and a lifelong joy of learning. By giving to MCM's Inspire a Child Annual Fund, you will help provide critical funding for museum operations and ongoing exhibit and program needs, as well as keep admission costs low ensuring MCM remains accessible to children and families of all backgrounds.

Help us continue to dream big!

DONATE TODAY!



MCM - MERIDIAN DONORS

THANK YOU DONORS!

Contributors to the Mississippi Children's
Museum - Meridian from

JUNE 1, 2022 - MAY 31, 2023

* denotes an in-kind donation

If you wish to change your recognition, please contact us at donate@mcm.ms.

THE FOLLOWING DONORS HAVE GIVEN GENEROUSLY TO OUR ANNUAL FUND TO CONTINUE CHAMPIONING OUR MISSION. CAPITAL CAMPAIGN GIFTS ARE NOT INCLUDED IN THIS LIST.

\$25,000+

Stacy and Billy Applebee
The McGinnis Lumber
Company, Inc.
The Molina Healthcare
Charitable Foundation
The Paul & Sherry
Broadhead Foundation
The Phil Hardin Foundation
The Riley Foundation

\$10,000 - \$24,999

Anonymous
Linda and Marty Davidson
Citizens National Bank
East Mississippi Oral &
Facial Surgery

\$5,000 - \$9,999

Kim and Steven Bowers
Laura and Clay Holladay
Deanna Wilbourn

Earnest Workers Circle of King's
Daughters and Sons
Frugé Oil Company
Lauderdale County Schools
Lauderdale County Tourism
Commission
Magnolia Beverage Company
Mississippi Power Company
The Citizens Bank
The Radio People
Wesley House Community Center

\$2,500 - \$4,999

Debra and John Anderson
Betty and Richard Vise
Kristi and John Voss
Century Club Charities, Inc.
Great Southern Bank
Johnson & Johnson
Meridian Public School District
Ochsner Rush Health
The Lamberth Foundation
of Mississippi

\$1,000 - \$2,499

Lynn and Sidney Bowers
Katie and Douglas Coleman
Linda and Freddy Grant
Amanda and James Holland
Clair and Brad Huff
Chris and Jim Lauderdale
Jean and David Makey
Ginger and Lawrence Mason
Vicky McDonnell
Jennifer and John McRae
Susie and Scott Morgan
Amy and Ken Nelson
Rita and Steven Redd
Mary and Don Rogers
Mary Allison and Kenneth Saul
Helen and Wade Sims
Hallie and Zach Swindoll
Diane and Sonny Toms
Cheryl and Gerald Waltman
Dianne and Ronnie Walton
Nicole and Kevin Ward
Anna and Daniel Wile

Heather and Will Woodall
Elite Flooring
Hardy P. Graham Foundation
Junior Auxiliary of Meridian
Meridian Pediatric Dental Group
Pearson & Company Insurance
Sequel Electrical Supply
Shine! Pediatric Psychology
Services, PLLC
Xtra Lite Lighting



TO VIEW A FULL LIST
OF DONORS SCAN
THE QR CODE!



MCM - JACKSON'S FALL CALENDAR

Please note that these dates and events take place in Jackson, MS.

SEPT



C3jr Coding Challenge



SCIENCE AFTER HOURS



Field Trip Friday



Mississippi Science Fest

OCT



MISSISSIPPI CHILDREN'S BOO!SEUM



PARK AFTER DARK

CHESS TOURNAMENTS

Jackson Dates:
Sept. 15 & Oct. 7
Meridian Dates:
Sept. 30

NOV



A Very Merry Night



Journey to the North Pole Opens



Gratitude Days

DEC



Jammies at Journey



NOON YEARS EVE!

JAN



STORYTELLING FESTIVAL

JACKSON SENSORY DAYS:
4th Sunday of every month 11 am - 1 pm



WINTER CAMP!

Jackson Winter Camp: December 27-29 and January 3-5
Meridian Winter Camp: Nov. 20-21, Dec. 20-21, 28-29

MCM - MERIDIAN'S FALL CALENDAR

Please note that these dates and events take place in Meridian, MS.



C3jr Coding Challenge



Field Trip Friday



Science Saturday



Sensory Friendly Day



MISSISSIPPI CHILDREN'S BOO!SEUM



Winter Wonderland Opens



Gratitude Days



Peppermint & PJs



Merry at the Museum Adults Only Event



NOON YEARS EVE!



STORYTELLING FESTIVAL

MERIDIAN SANTA DATES

12/1	6:00 - 8:00 PM
12/3	2:00 - 4:00 PM
12/10	2:00 - 4:00 PM
12/17	2:00 - 4:00 PM
12/23	2:00 - 4:00 PM



Join us for special Magic Mondays:
Meridian - Oct. 9
Both Museums - Nov. 20, Dec. 18, & Jan. 15



Both museums will be closed for the holidays! Closed on November 23, December 24, 25, 31, & January 1
Dates and events are subject to change. Visit mschildrensmuseum.org and mcmmeridian.org for an up-to-date schedule.



Mississippi Children's Museum



@mschildsmuseum



@mschildsmuseum



@mcmmeridian



@mcmmeridian



@mcmmeridian

Mississippi Children's Museum • 2145 Museum Boulevard,
Jackson, MS 39202 | Phone: 601.981.5469 | Email: info@mcm.ms

Mississippi Children's Museum - Meridian • 403 22nd Avenue South,
Meridian, MS 39301 | Phone: 601.512.0270 | Email: meridian@mcm.ms

MCM is a signature project of the Junior League of Jackson. MCM-Meridian's signature sponsors are The Riley Foundation and The Phil Hardin Foundation.