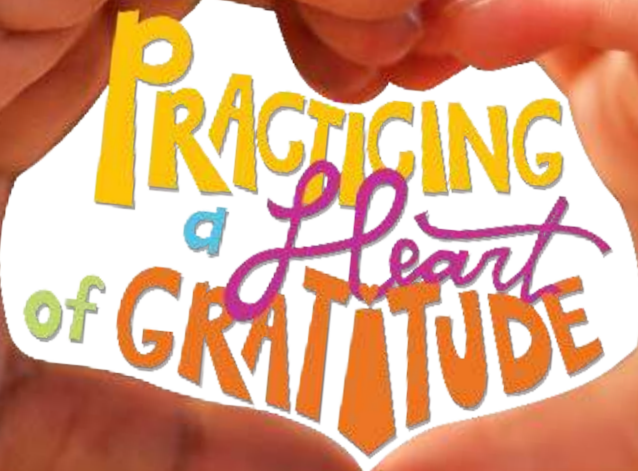




THE MCM PLAYBOOK

FALL 2022 • VOLUME 7 • ISSUE 2

GET INVOLVED
.....
SPOTTER'S
ADVENTURE
TRAIL
.....
HOLIDAY
EVENTS



As we take a moment to reflect on the journey of the past two years, we are filled with gratitude. While no one could have planned for the challenges we would face, MCM's phenomenal support system consisting of a dedicated group of staff, MCM Board of Directors, volunteers, museum members, MCM Partners, and the unwavering support from donors and sponsors, have made a challenging situation inspirational.

We are grateful to have been able to serve our community as a catalyst for combating learning loss during a pandemic, opening new experiences for our guests, and providing resources for all Mississippians to give our children a hopeful outlook for a brighter future. As we practice a heart of gratitude, we are thankful to celebrate these monumental highlights from the last two years:

- Provided a safe space for daily virtual school through a new program Launch into Learning
- Created online resources through a new platform called MCM at Home
- Hand delivered more than 1,200 activity kits statewide to families without online access
- Distributed 175,000 copies of the MCM Playbook statewide
- Received two Governor's Emergency Education Response (GEER) Fund grants that enabled us to execute Launch into Learning and created a professional development platform, The LIFT, to provide high quality literacy and STEAM training for educators

- Opened our first satellite museum, MCM-Meridian, which received the 2021 Governor's Award for Travel Attraction of the Year
- Received the nation's highest honor by being awarded the Institute of Museum and Library Services (IMLS) National Medal
- Opened a state-of-the-art 30,000 square foot playground at the LeFleur's Bluff Education and Tourism Complex, in partnership with MDWFP's Museum of Natural Science

With full hearts, we look forward to continuing to serve Mississippi's children by creating unparalleled experiences to inspire excellence and a lifelong joy of learning.



Gratefully,

Susan Garrard,
Mississippi Children's Museum President/CEO

Nonprofit Organization
U.S. Postage
PAID
Jackson, MS 39201
Permit No. 219

MISSISSIPPI CHILDREN'S MUSEUM
P.O. BOX 12870
JACKSON 39236



TABLE OF CONTENTS


3	Mississippi Science Festival
4-5	Learning Experiences
6	Rocky's House Statewide Tour
7	Get Involved
8-9	MCM at Home
10	Spotter's Adventure Trail
11-12	Holiday Events
13	MCM Partners
14	MCM Donors
15	MCM - Meridian Donors
16	Fall Calendar

BY THE NUMBERS

JACKSON	MERIDIAN
Memberships: 2,105	Memberships: 962
Museum Guests: 120,020	Museum Guests: 69,046
Educational Program	Educational Program
Participants: 21,936	Participants: 4,177
Field Trips: 12,512	Field Trips: 6,145
Birthday Parties: 381	Birthday Parties: 236
Birthday Party Guests: 8,019	Birthday Party Guests: 6,630
Facility Rentals: 59	Facility Rentals: 30
Volunteers: 1,071	Volunteers: 217
Volunteer Hours: 6,358.2	Volunteer Hours: 793.63
Value Saved: \$130,224.52	Value Saved: \$27,505.43

REVENUE & SUPPORT	
	TOTAL
Donations and Grants.....	\$2,732,979
Operating Revenue.....	\$2,281,137
Memberships.....	\$353,922
Educational Sponsors.....	\$331,117
Other Income.....	\$350,436
TOTAL REVENUE & SUPPORT.....	\$6,049,591
NET ASSET TOTAL.....	\$34,311,680
FUNCTIONAL EXPENSES	
Program Services.....	\$3,566,385
Management and General.....	\$823,012
Fundraising.....	\$182,892
TOTAL EXPENSES.....	\$4,572,289

Figures are based on MCM-Jackson and MCM-Meridian combined for the fiscal year June 1, 2021-May 31, 2022. Scan the QR code to view each location's financial reports.



The MCM Playbook
Fall 2022 Volume 7 Issue 2

Published By: Mississippi Children's Museum

Editors: Angela Mitchell & Clara Williams
Contributors: Tracy Pitts, William Moore, Rebecca Parker, MCM & MCM - Meridian Staff
Graphic Designer/Photographer: Haleigh Collins

2022-2023 BOARD OF DIRECTORS

Beth Hansen, Chairman; Alicen Blanchard, Donna Bruce, Michael Cormack, Terry Dale Cruse, Margaret Cupples, Lisa Didion, John Fletcher, Jeffrey Graves Jr., Jetson Hollingsworth, Wilson Hood, Olivia Host, Maggi Lampton, Carla Lewis, Ashley Meena, Melanie Morgan, Chip Pickering, Lori Quarles, Kaitlyn Vassar, Adams Yerger, IV, Camille Young

BOARD EMERITUS

Martin Jue & Judge James Graves

EX-OFFICIO MEMBER

Susan Garrard, President/CEO

MERIDIAN ADVISORY COMMITTEE

Dr. Terry Dale Cruse, Chairman; Hallie Pearson Swindoll, Secretary; John Anderson, Beth Clay, Dr. Amy Carter, Judge Veldore Young Graham, Otis Gowdy, M.D., David Hall, Kelvin Jackson, Dr. Asif Lala, Dustin Markham, Jim McGinnis, III, Melanie Mitchell, Chris Phillips, Wade Sims, Don Rogers

EX-OFFICIO MEMBERS

Dede Mogollon, Commander Brent Moore, and Colonel Cindy Smith



WELCOME, BARBARA!

MCM-MERIDIAN TRANSITIONS LEADERSHIP
FROM LIZ WILSON TO BARBARA ZELLER

The Mississippi Children's Museum is excited to welcome Barbara Zeller as the incoming Executive Director of MCM-Meridian. Barbara succeeds Elizabeth "Liz" Wilson who has been an integral part of MCM-Meridian since inception.

Through Liz's enthusiasm and commitment to the museum's mission over the years, she has established a solid foundation for MCM-Meridian and has prepared the museum for future success.

Barbara's shared passion and advocacy for early childhood education and mission-driven work makes her an excellent fit as MCM-Meridian's next Executive Director. Barbara brings a background in public health, grant writing, program development, volunteer coordination, and marketing from her recent work at local nonprofits. She has also demonstrated a commitment and drive to serving others, especially children, and making a positive impact in the local community as the 2021-2022 President of the Junior Auxiliary of Meridian.

"We are excited to welcome Barbara to the MCM team and look forward to her leadership as the museum continues to grow and inspire children and families in East Mississippi and beyond. Her background in public health will enhance the museum's statewide efforts to champion holistic health programs and exhibits for all children," said Garrard, President/CEO, MCM.



9.17.22

LONG LIVE WONDER

Explore all four museums in the LeFleur Museum District
for one low ticket price of \$10!
Purchase tickets at

[MS SCIENCEFEST.ORG](https://mssciencefest.org)

The Mississippi Science Festival (MSF) is the LeFleur Museum District's (LMD) signature event presented by C Spire, which will take place on **September 15-17, 2022**.

MSF brings the community together to celebrate careers in STEAM (science, technology, engineering, art, and math), and has introduced children of all ages to the wide variety of STEAM concepts and industries that are available in Mississippi. Events will take place over three days, in both the LeFleur Museum District in Jackson and at the Mississippi Children's Museum - Meridian (MCM-Meridian). Saturday's festival is open to the public and participation is encouraged statewide.

C Spire C3 Jr. Coding Challenge Thursday, September 15

Teams from across the state have been invited to the Mississippi Children's Museum in Jackson and Meridian to participate in C Spire's C3 Jr. event. Students will be guided through coding challenges by a C Spire Mentor, treated to lunch compliments of C Spire, and participate in an awards ceremony at the conclusion of the challenge.

Science After 6 Thursday, September 15 | 6:00 pm - 7:30 pm

The community is invited to help kick off the 7th Annual MSF at one of Jackson's newest and most eco-friendly gathering spots, the Ecoshed, for Science After 6. Tickets are \$15 each and include bits, bytes, and one beverage. This event is sponsored by C Spire and Southern Farm Bureau.

Field Trip Friday Friday, September 16 | 9:00 am - 1:00 pm

The four LMD museums and MCM-Meridian are inviting students to attend a special STEAM-themed Field Trip Friday. The museums will host a day dedicated to promoting STEAM subjects and increasing science literacy for field trip guests. Students attending Field Trip Friday will have an opportunity to participate in hands-on experiments, interactive exhibits, and see classroom science lessons come to life. Book your field trip by contacting any one of the museums.

Mississippi Science Festival Saturday, September 17 | 9:00 am - 4:00 pm

Guests can purchase 1 ticket for Saturday's festival and explore all 4 museums for one low ticket price of \$10. Exhibitors and activities will be at all four LMD museums - the Mississippi Sports Hall of Fame and Museum, the Mississippi Agriculture & Forestry Museum, the Mississippi Children's Museum-Jackson, and the MDWFP's Mississippi Museum of Natural Science.

Science Saturday in Meridian Saturday, September 17 9:00 am - 4:00 pm



The Mississippi Children's Museum - Meridian is celebrating STEAM in conjunction with the **Mississippi Science Festival!** Science Saturday offers an inclusive environment that inspires children and families to explore STEAM concepts and uncover possible careers for children in Mississippi. Families will be invited to interact with local leaders in STEAM and participate in educational, hands-on activities and interactive exhibits throughout the day.

Keynote Speaker Janet Marie Smith
Ag Museum | Friday, September 16 | 11:00 am - 12:30 pm
MS Sports Hall of Fame | Saturday, September 17 | 10:00 am - 11:00 am
Mississippi Children's Museum | Saturday, September 17 | 1:00 pm - 2:00 pm



For this year's MS Science Fest we are excited to welcome Major League Baseball (MLB) executive, architect, and urban planner Janet Marie Smith. She is a graduate of Callaway High School and Mississippi State University. Her accomplishments include renovating some of the most popular baseball parks in the country, including Baltimore's Oriole Park at Camden Yards, Atlanta Braves' Turner Field, Boston's Fenway Park, and Dodger Stadium in Los Angeles. Smith will be speaking to JPS students during MSF's Field Trip Friday, and will speak at the MS Sports Hall of Fame Saturday Morning and the Mississippi Children's Museum Saturday afternoon.



LEARNING EXPERIENCES

LAUNCH INTO LEARNING 2021-2022

Launch into Learning blasted off into a great school year with 50 children from Jackson Public Schools (JPS) including McWillie, Obama Magnet, and Wells APAC Elementary Schools. In September of 2021, MCM celebrated a highly anticipated grant partnership with JPS, which allowed us to host 50 additional children from Casey and Boyd Elementary Schools.

Each day, the museum's Red Rocket Café prepared a nutritious snack to fuel a fun for a day of hands-on STEAM learning, literacy workshops, mental and physical wellness lessons, and free play in the museum.

Upon the grand opening of the LeFleur's Bluff Playground, students were able to enjoy playground time as a new addition to their daily schedule. Also aiding in outdoor play was a collaboration with First Tee of Central MS, which provided children with golf lessons on "Fun Fridays!" Children continued their fun with a weekly field trip to our neighbors at the Mississippi Museum of Natural Science.

Various programs were led throughout the year by MCM's staff and local healthcare professionals, including our "Get Heart Smart" program, and a lesson on bike safety where each child received a free helmet to take home. In addition to the health activities, students spent a day with the Daughters of the American Revolution (DAR), where the group shared patriotic information, and assisted children in making cards for Veterans.

After a busy year of community service projects and hours of hands-on learning, MCM wrapped up the school year with a Family Night to celebrate the students' hard work and commitment to the program with awards, tasty treats, and a delicious meal.



BOOK A FIELD TRIP AT MCM TODAY!

MCM field trips promote hands-on, inquiry-based learning that helps foster valuable critical thinking skills and an enthusiasm for educational discovery. Our field trips are designed around the educational standards set by the Mississippi Department of Education with the goal of inspiring students to spark new ideas and make connections to classroom concepts during their museum visit.



Since 2010, MCM-Jackson has welcomed over half a million students through our doors and has hosted schools and organizations from all of Mississippi's 82 counties!

Field Trips hosted during the 2021-2022 school year:
Jackson: 12,512 students
Meridian: 6,145 students

SUMMER CAMP

This summer, MCM held 7 weeks of uniquely themed summer camps, each accompanied by specially curated hands-on activities. These camps, including Camp Backyard, NASA Astro Camp, Chess Challenge Camp, Super STEAM Camp, and Be an Artist Camp, provided children with the opportunity to both foster creativity and learn through various experiments.

Alongside daily indoor museum exploration and outdoor play, campers also enjoyed programming unique to each week's theme. MCM in Jackson and Meridian welcomed over 200 campers this summer and are already looking forward to booking next season's camps!

Upcoming Camp Dates

Jackson: Dec. 22 & 23 | Dec. 27-30

Meridian: Nov. 21 & 22 | Dec. 20 & 21 | Dec. 27 & 28



READ TO SUCCEED

MCM-Jackson hosted its 6th annual Read to Succeed program, which is an intensive summer camp dedicated to helping students from the Jackson Public School District who have not successfully passed the 3rd Grade Summative Reading Assessment. The program's mission is to help improve student's scores before the last testing date and be promoted to the 4th grade. Certified teachers are trained to identify students' trouble areas and develop appropriate plans to aid the students in being successful, confident readers.

BY THE NUMBERS

- 50 students attended MCM's Read to Succeed Camp
- 5 JPS schools served
- 32 lessons were taught throughout the week in phonics, comprehension, and vocabulary
- 400 nutritious meals provided by MCM
- 400 afternoon snacks were served to students
- 25% of Read to Succeed students passed the MKAS2



PLAY. EAT. LEARN.

MCM-Jackson's Play. Eat. Learn. series was founded through a collaboration between the Center for Advancement of Youth and the Junior League of Jackson. This educational learning series is geared toward helping parents and caregivers understand the complex mind of a child. This program presents a wonderful opportunity for the community to learn more about the pressing issues and needs that children and families face from experts in the field.

Visit our website to watch previous presentations and learn about Sleeping Soundly, Toddlerhood, Understanding Autism and more.



UPCOMING DATES

October 18 - Anxiety | Dr. Gabrielle Banks
January 17 - Toddlerhood and Big Emotions | Genevieve Garrett, LCSW
February 21 - Autism | Dr. Tanja Seifen
April 18 - Social Emotional Milestones | Dr. Courtney Walker

This free educational series at MCM-Jackson is open to the community. Dinner will be provided on a first-come, first-serve basis and childcare is available for ages 3 to 10. Dinner is from 5:30-6:00 p.m. and the presentation is from 6:00-7:15 p.m.

WHAT'S NEW!

KULTURE CITY

Did you know? Both MCM locations are officially Sensory Inclusive Certified by KultureCity!

KultureCity is a leading non-profit on sensory accessibility and acceptance and helps provide staff training and sensory kits to better accommodate guests with sensory needs. Sensory bags equipped with noise canceling headphones (provided by Puro Sound labs), fidget tools, verbal cue cards, and weighted lap pads are available for guests who may feel overwhelmed by the environment. Sensory challenges can be experienced by individuals with autism, dementia, PTSD, and other similar conditions (1 in 6 individuals). One of the major barriers for these individuals is sensitivity to over stimulation and noise. With its new certification, the Mississippi Children's Musuem is now better prepared to assist guests with sensory needs by having the most comfortable and accommodating experience possible when visiting!

Find our resources and download the KultureCity app on our website.



Jackson



Meridian



"Often times for these individuals and families who have sensory needs, going to events and public places like museums and science centers can be very difficult. The environment is very overwhelming whether it be crowds, lights, sounds, other external stimuli. By having sensory bags on site, it allows those families to have an additional layer of tools to have here that they can utilize."

-Uma Srivastava,
Executive Director of KultureCity

SENSORY FRIENDLY DAY EVENT

The Mississippi Children's Museum - Meridian held its first Sensory Friendly Day event on April 4, 2022. During this day, children with sensory needs had the opportunity to experience the museum with reduced stimuli and Sensory Inclusive Certified staff.

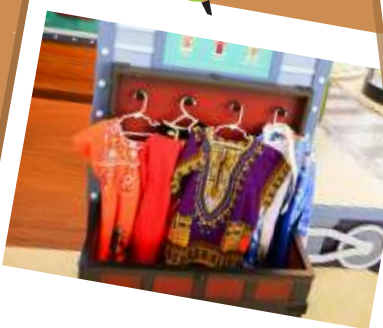


INTRODUCING A NEW EXHIBIT EXPERIENCE IN MERIDIAN!

MISSI THE TRAVELER TRAIN CAR



Travel the world in the new and improved Missi the Traveler Train Car exhibit! Guests are invited to hop aboard the geography-themed train car to explore cultures and languages spoken around the world. After a ceremonial ribbon cutting on June 30, guests were invited to explore the updated exhibit which now features a digital postcard station. The exhibit includes a photo booth with a built-in camera, a magnetic backdrop to add national landmarks to your window scene, and a touchscreen device that lets you add stickers to a digital postcard and email them to a friend.





W.K.
KELLOGG
FOUNDATION



Talk From the Start and Rocky's House were created through a partnership between the Mississippi Children's Museum and Barksdale Reading Institute, and funded by the W.K. Kellogg Foundation.



ROCKY'S HOUSE STATEWIDE TOUR

Rocky's House, an extension of the *Talk From the Start* advocacy campaign, is designed to raise awareness that talking to and with children from birth is essential to literary success. As our newest traveling exhibit, Rocky's House continues to tour Mississippi, teaching adults and caregivers how to *Talk From the Start* of children's lives for language and literacy development!

Rocky's House introduces caregivers and children to a cast of characters representing the diverse population of Mississippi. These characters, known as Rocky's friends, guide guests through three primary methods of language and literacy development: playing, talking, and reading. Visitors have an opportunity to learn about these methods and play them into practice!

This exhibit is an ideal learning experience for children ages 0-8, as well as Mississippians who want to help children grow in language and literacy development. For more information on how to bring Rocky's House to your community, visit talkfromthestart.org!

**BOOK ROCKY'S
HOUSE TODAY!**



WE ARE GRATEFUL FOR OUR...

VOLUNTEERS



MEMBERS



PARTNERS



VOLUNTEERS!

Sign up to volunteer at the Mississippi Children's Museum in Jackson and Meridian! Our volunteer programs for ages 16+ are the perfect way to earn community service hours, get real-world experience, and make a positive impact in the lives of children. We have volunteer opportunities for all ages and skillsets! **Become a Volunteer!**



Jackson



Meridian

MEMBERS!

Enjoy the fun all year long by becoming a Member! By joining, you get to enjoy unlimited play and exclusive member benefits including invitations to Members-Only Events, a subscription to the MCM Playbook, 10% off at the Trading Post, and so much more!



Become a Member



PARTNERS!

MCM Partners is a volunteer organization committed to promoting and financially supporting the Mississippi Children's Museum in Jackson and Meridian. Through their signature fundraising events, sponsorships, and volunteer hours, this group serves as a steadfast support system that helps MCM succeed in their vision.

By joining MCM Partners, you are playing a vital role in making the museum accessible to all, and aiding their mission to bring literacy, education, and inspiration to the children of Mississippi.

Become an MCM Partner:



Jackson



Meridian



WHAT DOES IT MEAN TO HAVE A HEART OF GRATITUDE?

MATERIALS : Pick-up sticks

Thankfulness is a socio-emotional habit that young children explore from an early age. By understanding thankfulness, young children can build sensitivities toward the feelings of others and develop empathy and other life-skills.

Do you know what gratitude means? Gratitude is a big word, but it means being thankful to others. We all have reasons to have gratitude, and for these we say, 'thank you.' We may be thankful for our families—for feeding us, reading us stories, or spending quality time with us. Animals, like the ones you will see on our new Spotter's Adventure Trail, are thankful for their habitat and the environment—the sunny day, the rain, or the trees for giving them a home and food. There are so many things that we can have gratitude for!

1. Grab your grown-up or a friend to play this game with you. Start by reading about gratitude! Then, we will play a game of Gratitude Pick-Up Sticks!
2. Decide who the first player will be. Hold all of the pick-up sticks in one hand, making sure that they are all grouped together in a bunch with the ends of the sticks touching the table or floor. Release your hand, allowing the sticks to scatter on the playing surface.
3. Player one will then pick up the sticks one by one. The only stick that is allowed to move is the one the player is trying to pick up. If any other stick moves, that player's turn is over, and the play passes to the next player.



MINDFULNESS

HEALTH

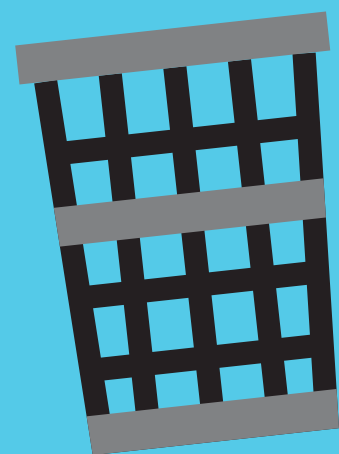
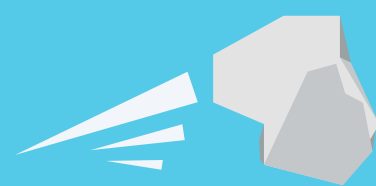
AT HOME BASKETBALL

MATERIALS: Paper & Wastebasket

Have you ever heard of hand-eye coordination?

Hand-eye coordination is the ability for the eyes to track the movement of your hands. This allows the eyes to send signals to your brain, which then communicates back to your hands. This whole process happens very quickly; so fast that you don't even know it's happening! But without it, we would have a hard time balancing, focusing our eyes on our hands' movements during exercise and sports, and even with reading and writing. Regular physical activity helps us improve our hand-eye coordination. Try this simple, at-home basketball drill to exercise your hand-eye coordination!

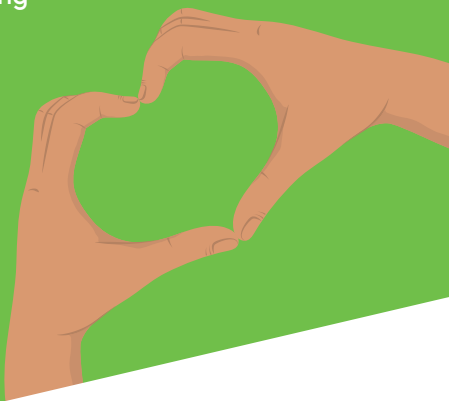
1. Grab a wastebasket or other container (a bucket or basket would also work well!), and some paper.
2. Ball up the paper. These will be your mini basketballs!
3. Place the wastebasket a few steps away from you. Try tossing your paper basketballs into it in a few different ways: overhand, underhand, over your shoulder, etc.
4. After you practice enough and tossing the basketballs into the wastebasket gets too easy, take a few more steps away from the wastebasket.
5. Keep increasing the distance between you and the wastebasket as you need a tougher challenge.
6. Grab your grown-up or a friend and compete against them! Who can get the most goals?



MATH HOME

- The next player may choose to continue picking up the remaining sticks or choose to begin again by gathering up all of the sticks and letting them scatter in a new formation.
- If a player successfully picks up all the sticks, that player begins again and continues to play until they lose their turn.
- For every stick you pick up, you must list one of the following (adjust the colors to the set of pick-up sticks you have):

- Red = name a person you are thankful for
- Orange = name a place you are thankful for
- Green = name a food you are thankful for
- Blue = name a thing you are thankful for
- Purple = player's choice; name anything you are thankful for



ART/STEAM

DESIGN THINKING CHALLENGE: WHAT'S YOUR SPORT?

MATERIALS:

- Paper (graph paper would be awesome!)
- Pencils
- Your favorite building materials (LEGOs, rocks/pebbles, craft sticks, more paper, etc.)
- Your imagination!



In this activity, you will use Design Thinking to create a brand-new sports arena! What kind of sport are you designing for? What kind of specific needs will your sport have?

What is Design Thinking?

Design Thinking is a framework used by Stanford's Institute of Design. It helps their students create products that meet the needs of their customers. It makes you think in a new way so you can solve problems. It starts with a general goal, so you have room for lots of ideas.

- Empathize:** Put yourself in your customer's shoes. In this case, your customers are the people playing the sport you chose! What would they want their new sports arena to look like? Are they playing something like basketball or football, or are they playing an entirely new sport?
- Define:** What do your players really need? They may want a super cool solid gold basketball goal, but do they need it? Will it help them play better?
- Ideate:** Brainstorm, brainstorm, brainstorm! In this step, no idea is a silly idea! Do you want to consider a solid gold basketball goal? You know what, go ahead! Anything goes in this stage.
- Prototype:** Now, try building what you designed. Make sure you have your favorite building materials, and construct what you planned out on the page!
- Test:** Give it a test, maybe with LEGO people or dolls, since it will be on a small scale. Did your LEGO person kick a ball and it flew across the room instead of staying in your arena? Maybe you need a barrier to keep things from escaping the playing field! You may have to repeat these two steps a few times. If it doesn't work the first time—back to the drawing board!

PEANUT (OR SUNFLOWER SEED) BUTTER & JELLY SANDWICH CODING CHALLENGE

MATERIALS:

Bread
Peanut butter or sunflower seed butter
Jelly
Blunt knives (for spreading)
Plates
Lined paper
Pencils

Did you know that you can practice coding without a computer? Computers require very specific instructions to complete tasks correctly. Grab a grownup or a friend and practice "coding" them to make a sandwich!

1. Make sure you have a piece of paper and a pencil ready. Start by writing down every single step you must take to make a peanut butter and jelly sandwich. Think about it really hard—there are steps you might not think about even though they are essential! Your instructions might look something like:

- Take a slice of bread.
- Put peanut butter on the slice.
- Take a second slice of bread.
- Put jelly on that slice.
- Press the slices of bread together.

2. Now look at your instructions again. Imagine that you are giving these instructions to someone who has never seen a peanut butter and jelly sandwich before! How do you think they might read these instructions?

- For instance, if they followed the steps above exactly, they might take a slice of bread and put the whole jar of peanut butter on top of it instead of spreading the peanut butter on the bread. Why? Because we didn't tell them to open the jar, use the knife to scoop some out, and spread it on the bread!

3. Give your first set of instructions to your grownup or friend and ask them to follow them as closely as possible. You can even tell them to imagine they are visiting Earth from outer space and have never seen a peanut butter and jelly sandwich before!

4. Repeat this process a few times, fixing your instructions every time to make them more exact. Your final set of instructions may look something like:

- Take a slice of bread.
- Open the jar of peanut butter by twisting the lid counter clockwise.
- Pick up the knife by the handle.
- Insert the knife into the jar of peanut butter.
- Withdraw the knife from the jar of peanut butter and spread it across the slice of bread.
- Take a second slice of bread.
- Repeat steps 2-5 with the second slice of bread and the jar of jelly.
- Press the two slices of bread together so that the peanut butter and jelly are touching.

5. Swap partners and let your grownup or friend try writing their own set of instructions, and take a turn being the computer yourself!

6. Remember, when you do not give a computer exact instructions when coding, it will often fail to do what you need it to do!

STEAM



Spotter's ADVENTURE TRAIL

The LeFleur's Bluff Education and Tourism Complex (LBC) is continuing to grow with the additions of an adventure trail and outdoor classroom and event space! Spotter's Adventure Trail will connect the Mississippi Children's Museum to the LeFleur's Bluff Playground and MDWFP's Museum of Natural Science. Along the trail, visitors will be able to meet Spotter the Otter and his friends, Claire Bear, Regal Eagle, and Sally Sawback as they learn about both health and nature.

Spotter the Otter is the main character that guests will find along Spotter's Adventure Trail. He is an explorative River Otter who is always looking for new friends and fun adventures. Spotter is grateful for many things, but he is most thankful for his friends! As he plays and explores with his friends, Spotter writes about his adventures in the books he carries on his back.

Spotter and all his friends are grateful to live in the state of Mississippi, and are most thankful when the residents of our state learn how to take care of themselves and their homes. Claire Bear has fun teaching her friends about the importance of sleep and forests; Regal Eagle likes coaching his friends to have strong bodies and habitats; and Sally Sawback enjoys relaxing with her friends so Mississippians can be mindful both of their own health and the health of the environment.

CLAIRE BEAR

Claire Bear is a Black Bear, a native mammal which can be found in Mississippi. She likes teaching her friends about the importance of healthy sleep. Black Bears sleep more when food is scarce. This kind of sleep is called torpor.



REGAL EAGLE

Regal Eagle is a Bald Eagle, a native raptor which can be found along the Pearl River. He likes teaching his friends about physical fitness. Bald Eagles can soar, glide, flap, walk, and even swim!



SALLY SAWBACK

Sally Sawback is a Ringed Sawback Turtle, a native reptile which is only found on the Pearl River! She likes teaching her friends about social and emotional wellbeing. Sawback Turtles rely on each other to look out for danger!



Thanks to generous funding from Blue Cross Blue Shield of Mississippi Foundation, Spotter's Adventure Trail and the nearby outdoor pavilion, The Den, will be open in the fall for residents and guests of Mississippi, and will be free to the public.

Join us for these **SPOOKTACULAR** events this fall!

MISSISSIPPI CHILDREN'S boo!seum

OCTOBER 22
10AM - 3PM

Join us in costume at the Mississippi Children's Boolseum in both Jackson and Meridian for a day full of spook-tacular science, festive fall games, creepy-crawly crafts, and glowing dance parties!

📍 JACKSON & MERIDIAN

OCTOBER 28
5:30 PM - 8:30 PM

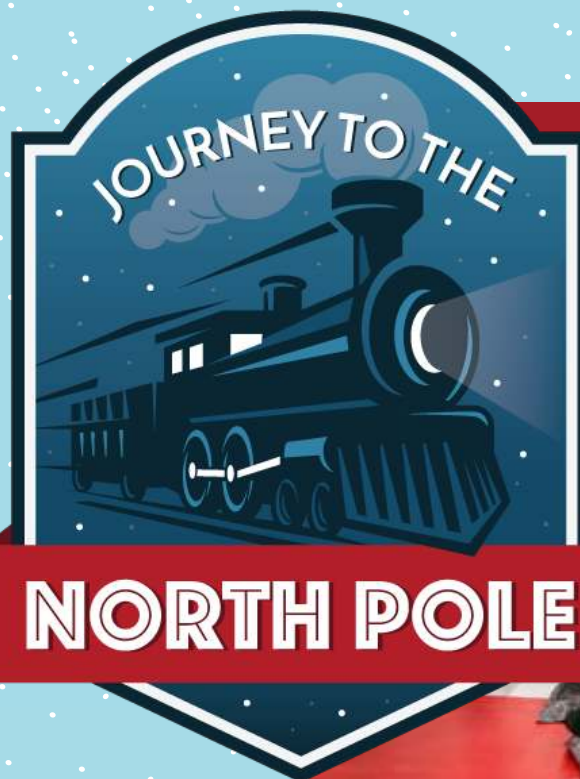
Dress up in your favorite costume and head to the Mississippi Children's Museum-Jackson and the MDWFP's Mississippi Museum of Natural Science for their annual Park After Dark party! You'll find spooky science and fantastic family fun activities at this special evening event. Enjoy admission to both museums for one ticket price of \$10!

📍 JACKSON

PARK AFTER DARK



Holiday Events



JOURNEY TO THE NORTH POLE

NOVEMBER 20 - JANUARY 8

Join us for Journey to the North Pole at MCM-Jackson, Nov. 20 - Jan. 8! This one-of-a-kind holiday experience transforms MCM into a magical winter wonderland with twinkling lights, train cars, and a child-sized post office where you can write letters to Santa. Glide around the Reindeer Rink in your favorite pair of festive socks, ride our thrilling 45-foot Snowflake Slide, and cozy up by the fire inside Eudora Welty's living room!

JACKSON

Check the back calendar to see when Santa comes to MCM!



JAMMIES AT JOURNEY

DECEMBER 2 | 5:30 PM - 7:30 PM

Guests are invited to wear their favorite pair of holiday jammies and coziest pair of socks to an after-hours Jammies at Journey event at MCM-Jackson. Enjoy festive educational programming and create magical memories at Jackson's ultimate holiday exhibit, Journey to the North Pole.

JACKSON



WINTER WONDER-LAND

DECEMBER 3 - 26

Experience the magic of the holidays at the Mississippi Children's Museum - Meridian! The museum becomes a magical Winter WONDER-Land sprinkled with snow, decorated with larger-than-life ornaments, and an 18-foot-tall Christmas tree! Enjoy Sundays with Santa, listen to stories told by Santa's elves, and even more than you can imagine.

MERIDIAN

Check the back calendar to see when Santa comes to MCM-M!



PEPPERMINT & PJS

DECEMBER 2 | 6:00 PM - 8:00 PM

MCM-Meridian members are invited to kick-off the holiday season after-hours at the museum. In your favorite pair of holiday PJs, join us to light up our 18-foot-tall Christmas tree and enjoy a variety of jolly activities to spark your holiday spirit!

MERIDIAN



NOON YEAR'S EVE IN BOTH JACKSON & MERIDIAN

DECEMBER 31 | 10:00 AM - 1:00 PM

Celebrate Noon Year's Eve in both Jackson and Meridian, while you ignite your creativity and invigorate your dreams for the new year surrounded by family and friends. Dance to catchy melodies, create festive party gear, and gather for a burst of confetti as the clock strikes noon!

JACKSON & MERIDIAN

*MCM-Meridian's Noon Year's Eve is sponsored by Community Bank.

GIVE THE GIFT OF IMAGINATION THIS HOLIDAY

- Visit the MCM Trading Post in Jackson or Meridian
- Shop our innovative and fun toy selection
- Complimentary gift wrapping and convenient curbside pickup upon request
- Gift certificates & memberships make the perfect holiday gift!



Scan the QR code to view our unique toy selection available in the Trading Post!



MCM PARTNERS



THANK YOU
TO OUR
NEON
NIGHT 2022
COMMITTEE!



NEON NIGHT

JACKSON

Guests danced the night away under neon lights at MCM Partners signature summer event, Neon Night in Jackson! Thank you to our Neon Night Committee and our presenting sponsor, TrustCare Kids, who helped make this event a grand success. In combined efforts from generous sponsors, event hosts, silent auction, and guests, this year's Neon Night fundraiser contributed over \$80,000 to the Mississippi Children's Museum!



MINGLE AT THE MUSEUM

MERIDIAN

Guests enjoyed outdoor carnival games and live music for this year's carnival-themed signature fundraiser, Mingle at the Museum in Meridian! The success of this event would not have been possible without our talented Mingle at the Museum Committee and the generosity of our sponsors. Thank you to our presenting sponsor, Citizens National Bank, and to Magnolia Beverage Company for your support! Through our drawdown raffle, generous sponsors, and guests, this year's event raised over \$29,000 to directly support the mission of the Mississippi Children's Museum - Meridian.

A VERY MERRY NIGHT NOVEMBER 19 | 6 PM - 9 PM

JACKSON

Previously known as Discovery Night, A Very Merry Night is MCM Partners' newest family fundraiser that will be the premiere holiday event of the year. This event will take place on the opening night of MCM's popular Journey to the North Pole holiday exhibit in Jackson. This magical evening will give families early access to photos with Santa, while also continuing to celebrate children's literature and the fascinating world of science, technology, engineering, art, and math (STEAM) through fun and interactive holiday-themed programming.

Scan the QR Code to Purchase
Tickets or Become a Host:



MERRY LITTLE CHRISTMAS: AN EXCLUSIVE PARTNERS PREVIEW DECEMBER 1 | 6 PM - 8 PM

Join MCM-M Partners to receive your invitation!

MERIDIAN



MIDNIGHT AT THE MUSEUM DECEMBER 31 | 8 PM - MIDNIGHT

MERIDIAN

Unveil the New Year at an event that will spark your curiosity in ways you never knew possible. In your best evening attire, come and dance the night away, enjoy decadent food, classy cocktails, and become captivated by ingenious performances, live entertainment, and the museum's very own countdown to midnight. You never know what will be around the corner at the Queen City's much anticipated New Year's Eve celebration!

Scan the QR code to become a
host or sponsor of Midnight at the
Museum: Cirque du Curiosité.



SAVE THE DATE | IGNITE THE NIGHT | 2.11.22 JACKSON

MCM STATEWIDE DONORS

THANK YOU DONORS!

Contributors to the Mississippi Children’s Museum from

JUNE 1, 2021 - MAY 31, 2022

* denotes an in-kind donation

If you wish to change your recognition, please contact us at donate@mcm.ms.

\$25,000+

Anonymous
Maggi and Lee Lampton
Atmos Energy Corporation
Barksdale Reading Institute
C Spire Foundation
Community Foundation
for Mississippi
Ergon Foundation, Inc.
Jackson Public Schools
Luckyday Foundation
Mississippi Department
of Human Services
Nissan North America, Inc.
Trustmark
W.K. Kellogg Foundation

\$10,000 - \$24,999

Frieda and Joe Lauderdale
Ashley and Hu Meena
Beth and Chip Pickering
Lucy Caldwell-Stair and
Thomas Stair
American Income Life:
The Powell Agency
BankPlus
Blue Cross & Blue Shield of
Mississippi
Dreizack Marketing
Eaton Corporation
Feild Co-Operative
Association, Inc.
Henry and Martha Hederman
Charitable Foundation
Kroger
Love’s Travel Stops &
Country Stores
Mississippi Baptist Medical
Center
Mississippi Humanities
Council, Inc.
Mississippi Sports Medicine &
Orthopaedic Center
Newk’s Eatery

Pruet Foundation
Regions Bank
Sanderson Farms, Inc.
Telos Foundation
The Fountain Family
Foundation
The Mapp Family Foundation
Toyota Motor North
America, Inc.
TrustCare Health
University of Mississippi
Medical Center
Visit Jackson
Wealthview Capital

\$5,000 - \$9,999

Melanie and Jamey Burrow
Bettye and James Graves
Mike McRee
Katherine and Robert Puckett
Wendy and Michael Tate
Amy and DeFord Walker
C Spire Wireless
CenterPoint Energy
Entergy Mississippi, Inc.
Eveland Family Foundation, Inc.
Jackson Heart Foundation
Jones Walker LLP
Massachusetts Institute of
Technology
Mississippi Department of
Public Safety
Puckett Machinery
Ross & Yerger Insurance, Inc.
Southern Farm Bureau Life
Insurance Company
The Overby Company
Wells Fargo Foundation
Zaxby’s

\$2,500 - \$4,999

Allison and Austin Barrett
Ginny DeHart
Margaret O. Cupples
Lisa and John Fletcher
Olivia and Jerry Host
Jennifer and Rafe Hudson
Janet and Charlie Spain
Jane Claire and Nason Williams
American Field Service
Corporation
Butler Snow, LLP
EastGroup Properties
Enterprise Holdings
Fifth Generation, Inc.
First Commercial Bank
Friends of Children’s Hospital
Hinds Behavioral Health
Services
J.L. Roberts Mechanical
Contacting LLC
McB’s Bar and Grill
McNeely Plastic Products, Inc.
Mississippi Arts Commission
Mississippi Prosthetic Dentistry
Molina Healthcare, Inc.
Monkee’s of Ridgeland
Paul Moak Automotive, Inc.
Tito’s Handmade Vodka*
Southern Smiles Pediatric
Dentistry
Sunbelt Sealing, Inc.
Sysco Jackson, LLC*
The Radio People*
Visit Mississippi
Wier Boerner Allin Architecture
Wendy’s

\$1,000 - \$2,499

Alicen and E.J. Blanchard
Elizabeth and Harold Boone
Barbara and Jason Craft
Meredith and Jimmy
Creekmore

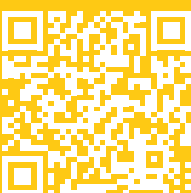
Sidney and Holt Crews
Frances and Justin Croft
Laura Daniel
Mary Preston and John
Dubberly
Anne and Mike Dulske
Brian Fenelon
Kelley Fenelon
Billie and Al Green
Beth and Nick Hansen
Margaret and Jimmy Hays
Emily and Kern Hoff
Mamie and Jet Hollingsworth
Carter and Wilson Hood
Jeannie and Harrison Hood
Tish and Haden Hughes
Paula and Randy James
Betty and Martin Jue
Sue and Peter Keyes
Joyce and David Marion
Lyn and David McMillin
Liz and Kerk Mehrle
Laurel Mehrle
Britney and Jimbo Moss
Amanda and Scott Overby
Swayze and Will Pentecost
Mary Frances and Jaron Priest
Mary and Richard Puckett
Mary and Alex Purvis
Lori Quarles
Sara and Bill Ray
Margaret and Nolan Ryan
Lori and Randy Sanders
Pavanpreet and Sunny Sethi
Jennie and Chris Simmons
Sarah and Jeff Skelton
Geri Beth and Allan Smith
Carol Tatum
Matt Watson
Kelly and Ross Weems
Julie and Dudley Wooley
Jordan and Adams Yerger
Ann Carter, Inc.
Ballew Wealth Management

Blanchard Group, LLC
Bradley, LLP
Capitol Resources, LLC
Carr, Riggs & Ingram, LLP
Chad Mars, LLC*
Community Bank
Cornerstone Government
Affairs
Daniel Coker Horton & Bell
Davaine Lighting*
Dunn French Foundation
George W. May, Jr., DMD and
Misti Goff Roberts, DMD
Grantham Poole CPAs
International Paper
Foundation
KPMG, LLP
Marion Counseling Services,
PLLC
Mississippi Center For
Advanced Medicine
Mississippi Forestry Association
Network For Good
Origin Bank
Phelps Dunbar LLP
RJ Young
Saint Andrew’s Episcopal
School
Sam E. and Burnice C. Wittel
Foundation
Sandifer Orthodontics
Southern Beverage-Budweiser*
Tate Homes, LLC
VanDevender Family
Foundation

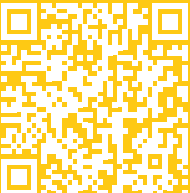
WE ARE GRATEFUL FOR OUR DONORS!

It is through generous community support that MCM is able to continually create unparalleled experiences that inspire excellence and a lifelong joy of learning. By giving to MCM’s Inspire a Child Annual Fund, you will help provide critical funding for museum operations and ongoing exhibit and program needs, as well as keep admission costs low ensuring MCM remains accessible to children and families of all backgrounds!

DONATE
TODAY!



SCAN HERE FOR A
FULL LIST OF DONORS.



MCM - MERIDIAN DONORS

THANK YOU DONORS!

Contributors to the Mississippi Children's Museum - Meridian from
JUNE 1, 2021 - MAY 31, 2022
* denotes an in-kind donation
If you wish to change your recognition, please contact us at donate@mcm.ms.

THE FOLLOWING DONORS HAVE GIVEN GENEROUSLY TO OUR ANNUAL FUND TO CONTINUE CHAMPIONING OUR MISSION. CAPITAL CAMPAIGN GIFTS ARE NOT INCLUDED IN THIS LIST.

\$25,000+

Michelle Merson and Sammi Fronstin
Community Bank
Mississippi Forestry Association
The Molina Healthcare Charitable Foundation
The Riley Foundation
Leo W. Seal Family Foundation

\$10,000 - \$24,999

Bet and Doug Deweese
Allie Cat Run & Festival Fund
Anderson Regional Health System
Crooks Foundation
Citizens National Bank
East MS Oral & Facial Surgery
Mitchell Distributing
Meridian Airport Authority
Meridian Coca-Cola Bottling Company

\$5,000 - \$9,999

Barbara and Gary Boone
Pat Jarrett
Bragan Petrey
East Mississippi Development Foundation
Hardy P. Graham Foundation
Lauderdale County School District
Lauderdale County Tourism Commission
Meridian Downtown Hotels
Meridian Public School District
Mississippi Band of Choctaw Indians
Mississippi Power Company
The Radio People
Van Zyverden

\$2,500 - \$4,999

Cindy and Jim McGinnis
Susie and Scott Morgan
Lorena Taracena
Betty and Richard Vise
Century Club Charities

Freddies Fine Spirits
Johnson & Johnson
Mitchell Signs
Pampered Bodies Day Spa
The Lamberth Foundation of Mississippi

\$1,000 - \$2,499

Melanie and Ric Alexander
Amanda and Matt Cassell
Susan and Bob Coffin
Clair and Brad Huff
Otis Gowdy, Jr.
Kim and Chris Knight
Chris and Jim Lauderdale
Ginger and Lawrence Mason
Jessica and Todd Meyer
Amy and Ken Nelson
Jenn and John Northam
Rhonda and Edward Poole
Rita and Steven Redd
Felicia and Patrick Robbins
Hallie and Zach Swindoll
Leigh and Danny Thomas
Helen and Lee Valentine

Cheryl and Gerald Waltman
Nicole and Kevin Ward
Christin and Joshua Waters
Kim and M.L. Waters
A & B Electric
Cater's Market
Community Foundation of East Mississippi
Elite Flooring
Great Southern Bank
Henderson Steel Corporation
Hill Real Estate Group
Magnolia Steel
Meridian Oncology Associates
Meridian Pediatric Dental
Meridian Plastic Surgery
Pearson & Company Insurance
Pilot Company
Rush Health Systems
Sequel Electrical Supply
Shine! Pediatric Psychology Services, PLLC
Stifel Nicolaus
The Ice Plant*
Trucker's Supply Company*

PLAYING FOR KEEPS - RESERVE FUND

The Playing For Keeps Fund enables MCM - Meridian to maintain our treasured exhibits now and into the future and continue in our mission of encouraging children to learn through play.

\$25,000+

Lauderdale County Tourism Commission
The McGinnis Lumber Co., Inc.

\$10,000 - \$24,999

Linda and Marty Davidson
Bowers Auto

\$2,500 - \$4,999

Otis Gowdy, Jr.

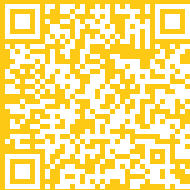
WE ARE GRATEFUL FOR OUR DONORS!

To continue our mission to inspire excellence and a lifelong joy of learning, we need your support!

DONATE TODAY!



SCAN HERE FOR A FULL LIST OF DONORS.



MCM - JACKSON'S FALL CALENDAR

Please note that these dates and events take place in Jackson, MS.

SEPT



15 C3jr Coding Challenge



15 SCIENCE AFTER 6



16 Field Trip Friday



17 Mississippi Science Fest

OCT



22 MISSISSIPPI CHILDREN'S BOO.seum



28 Park After Dark

NOV



19 A Very Merry Night



20 Journey to the North Pole Opens



21 MAGIC MONDAY

DEC



2 Jammies at Journey



31 NOON YEARS EVE!

JAN



16 Storytelling Festival



18 MAGIC MONDAY

JACKSON SANTA DATES

11.21.22	10:00 am - 12:00 pm & 1:00 - 3:00 pm
12.2.22	5:30 - 7:30 pm
12.3.22	10:00 am - 12:00 pm
12.4.22	2:00 - 4:00 pm
12.10.22	10:00 am - 12:00 pm & 1:00 - 3:00 pm
12.17.22	1:00 - 3:00 pm
12.18.22	2:00 - 4:00 pm
12.23.22	10:00 - 12:00 pm

MCM - MERIDIAN'S FALL CALENDAR

Please note that these dates and events take place in Meridian, MS.



15 C3jr Coding Challenge



16 Field Trip Friday



17 SCIENCE SATURDAY



10 MAGIC MONDAY



22 MISSISSIPPI CHILDREN'S BOO.seum



21 MAGIC MONDAY



2 Peppermint & PJs



3 Winter Wonderland Opens



31 NOON YEARS EVE!



31 Midnight at the Museum presented by BankPlus



16 Storytelling Festival



18 MAGIC MONDAY

MERIDIAN SANTA DATES

12.2.22	6:00 - 8:00 pm
12.4.22	2:00 - 4:00 pm
12.11.22	2:00 - 4:00 pm
12.18.22	2:00 - 4:00 pm
12.23.22	2:00 - 4:00 pm

WINTER CAMP!

Jackson Winter Camp: December 22-23, 27-30
Meridian Winter Camp: Nov 21-22 & Dec 20-21 & 27-28

Both museums will be closed for the holidays!
Dates closed: November 24, December 24-25, January 1



JOIN US FOR HOLIDAY MAGIC MONDAYS
DECEMBER 19 & 26 AT BOTH MUSEUMS!

Dates and events are subject to change. Visit mschildrensmuseum.org and mcmmeridian.org for an up-to-date schedule.



Mississippi Children's Museum



@mschildsmuseum



@mschildsmuseum

Mississippi Children's Museum • 2145 Museum Boulevard,
Jackson, MS 39202 | Phone: 601.981.5469 | Email: info@mcm.ms



@mcmmeridian



@mcmmeridian



@mcmmeridian

Mississippi Children's Museum - Meridian • 403 22nd Avenue South,
Meridian, MS 39301 | Phone: 601.512.0278 | Email: meridian@mcm.ms

MCM is a signature project of the Junior League of Jackson. MCM-Meridian's signature sponsors are The Riley Foundation and The Phil Hardin Foundation.